

HEAVY DUTY SEALED CONNECTOR SERIES

FOR INDUSTRIAL & COMMERCIAL TRANSPORTATION

TERMINALS AND CONNECTORS



WE GO TO EXTREMES TO MAKE SURE **EVERY CONNECTION COUNTS**









TE Connectivity (TE) Industrial & Commercial Transportation (ICT) is a reliable provider of solutions for even the harshest environment. With a focus on employee expertise and durable products, we deliver the solutions and support our customers can count on.

Years ago, tractors, construction equipment, trucks, and boats had simple electrical systems that might have included electrical starting and a basic lighting package. Today, ECUs, joysticks, fuel-efficient engines, LED lights, and CAN systems are standard equipment. The need to protect sensitive electrical systems from vibration, moisture, dust, dirt, salt, and airborne particles has never been greater. TE Industrial & Commercial Transportation is a leader in supporting today's increasingly complex and sophisticated equipment and applications.

Our comprehensive line of products includes an unparalleled portfolio of rugged sensors, terminals, connectors, relays, and hybrid electric mobility solutions. These solutions are designed to withstand the harshest environmental conditions and to help vehicles operate safer, cleaner, and smarter.

Our solutions adapt to virtually any **harsh environment application**, including:

- 
 Motors and Gearboxes
- 
 ABS/EBS Brake Units
- 
 Telematics Units
- 
 Sensors
- 
 Wire-To-Wire Coupling at the Chassis
- 
 Infotainment Applications



2,000+ EMPLOYEES



10,000 CUSTOMERS



20,000+ DIFFERENT PARTS

MARKETS WE SERVE



ON-HIGHWAY



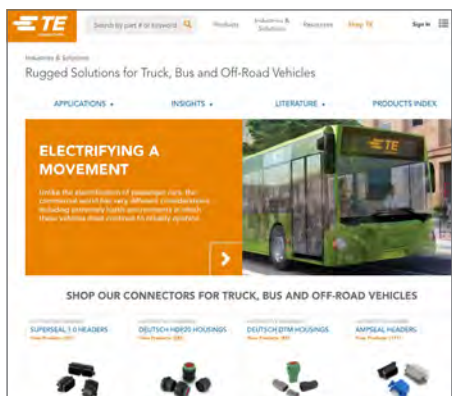
OFF-HIGHWAY



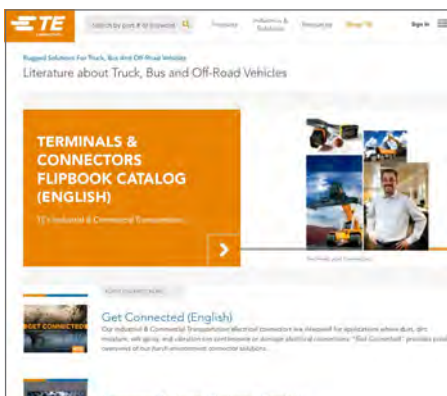
**RECREATIONAL
TRANSPORTATION**

ONLINE RESOURCES

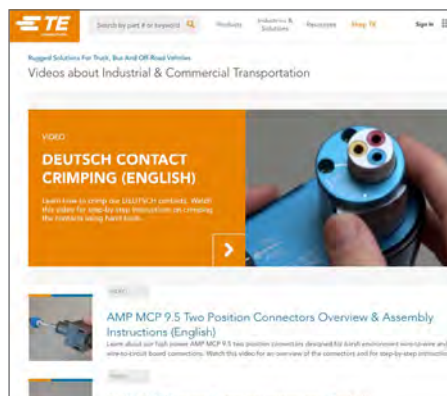
To learn more about TE Connectivity Industrial & Commercial Transportation, its products, and their corresponding documents and videos, please check out the following pages on TE.com:



TE.COM/ICT



**ICT LITERATURE
ON TE.COM**



**ICT VIDEOS
ON TE.COM**



TE SOLUTION CENTER

You can rely on TE Connectivity's helpful Solution Center team to provide answers to your general and technical questions.

Connect with our Solution Center staff at:
te.com/support



HDSCS Connector Seri Heavy Duty Sealed Connector Series

for Industrial & Commercial Transportation



Heavy Duty Sealed Connector Series

Our heavy duty sealed connectors are designed to meet the rigorous demands of the commercial vehicle industry and off-road applications that require the highest standards of performance. Made from a rugged UL94 V-0-rated thermoplastic, heavy duty sealed connectors have an integrated secondary lock with a poka-yoke feature that can be used for inline or flange-mounted applications in a wire-to-wire or wire-to-device configuration.

Rated to IP67 and IP6K9K (when used with a backshell), this series is available in five housing sizes with four keying options. They are offered in arrangements ranging from 2 to 18 positions. Solutions for CAN bus architecture are also available.

Accessories include backshells, protection caps, cavity plugs, and fixing slides.



Product Benefits.....	6
Product Applications.....	6
Product Documentation.....	7
Performance Specifications.....	7
Material Specifications.....	7
Housings.....	8-15
Accessories.....	16-19
Contacts.....	20-25
Tooling.....	26-28
How To Instructions.....	29
Index.....	30-31

Heavy Duty Sealed Connector Series

BENEFITS

- Optimize applied costs with AMP MCP 1.5K, 2.8, and 6.3/4.8K contacts. The shared family supports a broad range of heavy-duty applications with high current capacity.
- Protect from dust, water, and overspray with up to IP69K rugged sealing capabilities.
- Easily insert and extract contacts and enjoy trouble-free maintenance with individual wire seals designed to crimp at the base of the terminal.
- Quickly verify terminal position with the integrated secondary locking device and poka-yoke system, using a reliable assembly process.

KEY INDUSTRIES

The heavy duty sealed connector series can be utilized in the truck, bus, construction, agriculture, and special vehicles industries.



Truck



Bus



Construction



Agriculture



Special

APPLICATIONS

The heavy duty sealed connector series can be utilized in the following applications:



Motors and Gearboxes



ABS/EBS Brake Units



Hydraulic Pumps



Fuel Level Sensors



Wire-to-Wire Coupling at the Chassis



Actuators



Switches

Heavy Duty Sealed Connector Series

for Industrial & Commercial Transportation

PRODUCT DOCUMENTATION

Additional product documentation is available for assistance with heavy duty sealed connector series products.

The following documentation may be helpful:

[108-94020 \(Product Specification, Heavy Duty Sealed Connector Series\)](#)

[114-18756 \(Application Specification, Heavy Duty Sealed Connector Series\)](#)

[1563709 \(Product Group Drawing\)](#)



PERFORMANCE SPECIFICATIONS

Temperature:	Operating at temperatures -40°C to +140°C
Mating Durability:	Contacts: up to 10 cycles (tin), up to 50 cycles (silver), up to 100 cycles (gold); see individual product specifications for additional details.
Insulation Resistance:	500 V DC, test per ISO 16750-2 (4.12)
Immersion:	IP67 rating, IP69K (with cover), for flanged tab housings, only by observing mounting instructions.
Random Vibration:	Tested at 177 m/s ² , 94 hours per axis. See product spec 108-94020 for full specifications.
Voltage:	Up to 60 V DC
Flammability:	UL 94-V0-rated material

MATERIAL SPECIFICATIONS

Flange Seal:	Silicone rubber
Seal for Secondary Locking:	Silicone rubber
Housing:	Glass-filled PBT
Secondary Lock:	Glass-filled PBT
Slide Lock:	Glass-filled PBT

Heavy Duty Sealed Connector Series

for Industrial & Commercial Transportation

Heavy Duty Sealed Connector Series Housings (Group A)

GROUP A HOUSINGS



GROUP A SIZE CONFIGURATIONS



2 Positions
2 size 2.8



2 Positions
2 size 1.5K



3 Positions
3 size 1.5K



DIMENSIONS

Receptacle Housing			Flanged Tab Housing			Flangeless Tab Housing		
Overall Length A	Overall Height B	Overall Width C	Overall Length D	Overall Height E	Overall Width F	Overall Length G	Overall Height H	Overall Width I
30.75-31.25 mm (1.211-1.231")	18.5 mm (0.728")	26.0 mm (1.02")	47.05-48.1 mm (1.852-1.89")	29.8 mm (1.17")	37.5 mm (1.48")	47.05-48.1 mm (1.852-1.89")	19.0 mm (0.748")	27.6 mm (1.09")

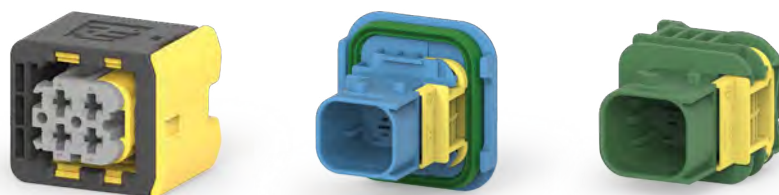
ORDERING INFORMATION

Positions	Contacts	Keying Color	Receptacle Housing	Tab Housing	
				With Flange	Without Flange
2	(2x) 2.8	Black	1-1418483-1	1-1703841-1	1-1703839-1
		Gray	2-1418483-1	2-1703841-1	2-1703839-1
		Green	3-1418483-1	3-1703841-1	3-1703839-1
		Blue	4-1418483-1	4-1703841-1	4-1703839-1
(3) 2	(2x) 1.5K (1x) blank	Black	1-1418448-2	*	*
		Gray	2-1418448-2	*	*
		Green	3-1418448-2	*	*
		Blue	4-1418448-2	*	*
3	(3x) 1.5K	Black	1-1418448-1	1-1703843-1	1-1670730-1
		Gray	2-1418448-1	2-1703843-1	2-1670730-1
		Green	3-1418448-1	3-1703843-1	3-1670730-1
		Blue	4-1418448-1	4-1703843-1	4-1670730-1

*Other configurations available upon request. Please contact TE for additional information.

Heavy Duty Sealed Connector Series Housings (Group B)

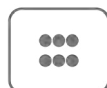
GROUP B HOUSINGS



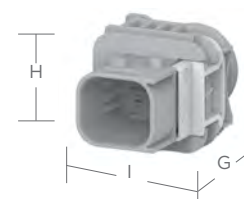
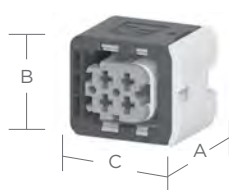
GROUP B SIZE CONFIGURATIONS



4 Positions
4 size 2.8



6 Positions
6 size 1.5K



DIMENSIONS

Receptacle Housing			Flanged Tab Housing			Flangeless Tab Housing		
Overall Length A	Overall Height B	Overall Width C	Overall Length D	Overall Height E	Overall Width F	Overall Length G	Overall Height H	Overall Width I
31.3 mm (1.23")	25.7 mm (1.01")	30.2 mm (1.19")	47.05-48.1 mm (1.852-1.89")	39.8 mm (1.57")	37.5 mm (1.48")	47.05-48.1 mm (1.852-1.89")	27.0 mm (1.06")	27.6 mm (1.09")

ORDERING INFORMATION

Positions	Contacts	Keying Color	Receptacle Housing	Tab Housing	
				With Flange	Without Flange
4	(4x) 2.8	Black	1-1418390-1	1-1703808-1	1-1703818-1
		Gray	2-1418390-1	2-1703808-1	2-1703818-1
		Green	3-1418390-1	3-1703808-1	3-1703818-1
		Blue	4-1418390-1	4-1703808-1	4-1703818-1
6	(6x) 1.5K	Black	1-1418469-1	1-1703820-1	1-1703773-1
		Gray	2-1418469-1	2-1703820-1	2-1703773-1
		Green	3-1418469-1	3-1703820-1	3-1703773-1
		Blue	4-1418469-1	4-1703820-1	4-1703773-1

Heavy Duty Sealed Connector Series

for Industrial & Commercial Transportation

Heavy Duty Sealed Connector Series Housings (Group C)

GROUP C HOUSINGS



GROUP C SIZE CONFIGURATIONS



2 Positions
2 size 6.3/4.8K



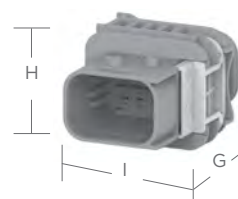
6 Positions
6 size 2.8



7 Positions
4 size 1.5K
3 size 2.8



8 Positions
8 size 1.5K



DIMENSIONS

Receptacle Housing			Flanged Tab Housing			Flangeless Tab Housing		
Overall Length A	Overall Height B	Overall Width C	Overall Length D	Overall Height E	Overall Width F	Overall Length G	Overall Height H	Overall Width I
31.3 mm (1.23")	25.7 mm (1.01")	31.2 mm (1.23")	47.05-50.6 mm (1.852-1.99")	39.8 mm (1.57")	42.5 mm (1.67")	47.05-50.6 mm (1.852-1.99")	27.0 mm (1.06")	32.6 mm (1.28")

ORDERING INFORMATION

Positions	Contacts	Keying Color	Receptacle Housing	Tab Housing	
				With Flange	Without Flange
2	(2x) 6.3/4.8K	Black	1-1564542-1	1-1564546-1	1-1564544-1
		Gray	2-1564542-1	2-1564546-1	2-1564544-1
		Green	3-1564542-1	3-1564546-1	3-1564544-1
		Blue	4-1564542-1	4-1564546-1	4-1564544-1
6	(6x) 2.8	Black	1-1418437-1	*	*
		Gray	2-1418437-1	*	*
		Green	3-1418437-1	*	*
		Blue	4-1418437-1	*	*
7	(4x) 1.5K (3x) 2.8	Black	1-1418480-1	1-1670214-1	1-1703648-1
		Gray	2-1418480-1	2-1670214-1	2-1703648-1
		Green	3-1418480-1	3-1670214-1	3-1703648-1
		Blue	4-1418480-1	4-1670214-1	4-1703648-1
8	(8x) 1.5K	Black	1-1418479-1	1-1564416-1	1-1564512-1
		Gray	2-1418479-1	2-1564416-1	2-1564512-1
		Green	3-1418479-1	3-1564416-1	3-1564512-1
		Blue	4-1418479-1	4-1564416-1	4-1564512-1

*Other configurations available upon request. Please contact TE for additional information.

Heavy Duty Sealed Connector Series Housings (Group D)

GROUP D HOUSINGS



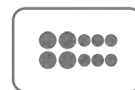
GROUP D SIZE CONFIGURATIONS



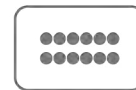
4 Positions
2 size 1.5K
2 size 6.3/4.8K



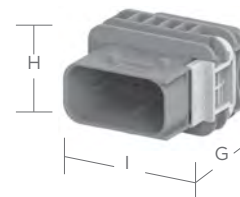
8 Positions
8 size 2.8



10 Positions
6 size 1.5K
4 size 2.8



12 Positions
12 size 1.5K



DIMENSIONS

Receptacle Housing			Flanged Tab Housing			Flangeless Tab Housing		
Overall Length A	Overall Height B	Overall Width C	Overall Length D	Overall Height E	Overall Width F	Overall Length G	Overall Height H	Overall Width I
31.3 mm (1.23")	25.7 mm (1.01")	39.2 mm (1.54")	47.05-48.1 mm (1.852-1.89")	39.8 mm (1.57")	50.5 mm (1.99")	47.05-48.1 mm (1.852-1.89")	27.0 mm (1.06")	40.6 mm (1.60")

ORDERING INFORMATION

Positions	Contacts	Keying Color	Receptacle Housing	Tab Housing	
				With Flange	Without Flange
4	(2x) 1.5K (2x) 6.3/4.8K	Black	*	*	*
		Gray	2-2208157-1	*	*
		Green	3-2208157-1	*	*
		Blue	4-2208157-1	*	*
8	(8x) 2.8	Black	1-1670894-1	*	1-1564522-1
		Gray	2-1670894-1	*	2-1564522-1
		Green	3-1670894-1	*	3-1564522-1
		Blue	4-1670894-1	*	4-1564522-1
10	(6x) 1.5K (4x) 2.8	Black	1-1564514-1	1-1564518-1	1-1564516-1
		Gray	2-1564514-1	2-1564518-1	2-1564516-1
		Green	3-1564514-1	3-1564518-1	3-1564516-1
		Blue	4-1564514-1	4-1564518-1	4-1564516-1
12	(12x) 1.5K	Black	1-1703639-1	1-1564520-1	1-1564414-1
		Gray	2-1703639-1	2-1564520-1	2-1564414-1
		Green	3-1703639-1	3-1564520-1	3-1564414-1
		Blue	4-1703639-1	4-1564520-1	4-1564414-1

*Other configurations available upon request. Please contact TE for additional information.

Heavy Duty Sealed Connector Series

for Industrial & Commercial Transportation

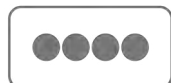
Heavy Duty Sealed Connector Series Housings

(Group E)

GROUP E HOUSINGS



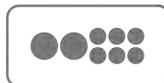
GROUP E SIZE CONFIGURATIONS



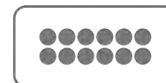
4 Positions
4 size 6.3/4.8K



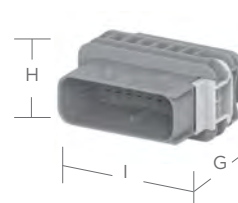
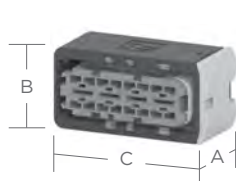
6 Positions
4 size 2.8
2 size 6.3/4.8K



8 Positions
6 size 2.8
2 size 6.3/4.8K



12 Positions
12 size 2.8



DIMENSIONS

Receptacle Housing			Flanged Tab Housing			Flangeless Tab Housing		
Overall Length A	Overall Height B	Overall Width C	Overall Length D	Overall Height E	Overall Width F	Overall Length G	Overall Height H	Overall Width I
31.3 mm (1.23")	25.7 mm (1.01")	51.2 mm (2.02")	50.6 mm (1.99")	39.8 mm (1.57")	62.5 mm (1.46")	47.1 mm (1.85")	27.0 mm (1.06")	52.6 mm (2.07")

ORDERING INFORMATION

Positions	Contacts	Keying Color	Receptacle Housing	Tab Housing	
				With Flange	Without Flange
4	(4x) 6.3/4.8K	Black	1-1564330-1	1-1564536-1	1-1564534-1
		Gray	2-1564330-1	2-1564536-1	2-1564534-1
		Green	3-1564330-1	*	3-1564534-1
		Blue	4-1564330-1	*	4-1564534-1
(8) 6	(4x) 2.8 (2x) 6.3/4.8K (2x) blank	Black	1-2299782-2	*	*
		Gray	2-2299782-2	*	*
		Green	3-2299782-2	*	*
		Blue	4-2299782-2	*	*
8	(6x) 2.8 (2x) 6.3/4.8K	Black	1-2299782-1	*	*
		Gray	2-2299782-1	*	*
		Green	3-2299782-1	*	*
		Blue	4-2299782-1	*	*
12	(12x) 2.8	Black	1-1670901-1	*	*
		Gray	2-1670901-1	*	*
		Green	3-1670901-1	*	*
		Blue	4-1670901-1	*	*

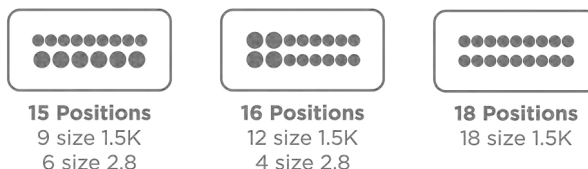
*Other configurations available upon request. Please contact TE for additional information.

Heavy Duty Sealed Connector Series Housings (Group E)

GROUP E HOUSINGS



GROUP E SIZE CONFIGURATIONS



DIMENSIONS



Receptacle Housing			Flanged Tab Housing			Flangeless Tab Housing		
Overall Length A	Overall Height B	Overall Width C	Overall Length D	Overall Height E	Overall Width F	Overall Length G	Overall Height H	Overall Width I
31.3 mm (1.23")	25.7 mm (1.01")	51.2 mm (2.02")	47.1-48.1 mm (1.85-1.89")	39.8 mm (1.57")	62.5 mm (1.46")	47.1-48.1 mm (1.85-1.89")	27.0 mm (1.06")	52.6 mm (2.07")

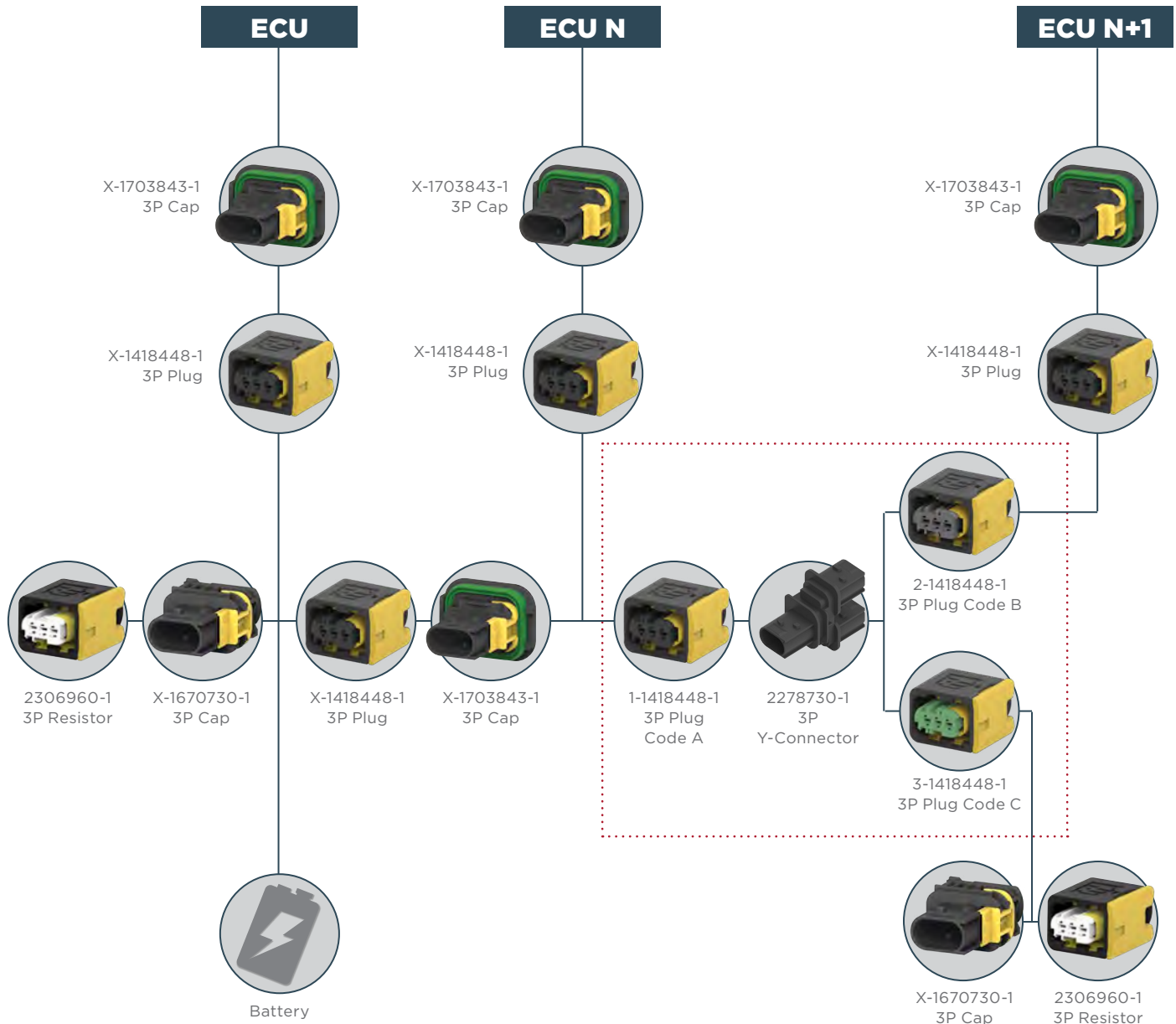
ORDERING INFORMATION

Positions	Contacts	Keying Color	Receptacle Housing	Tab Housing	
				With Flange	Without Flange
15	(9x) 1.5K (6x) 2.8	Black	1-1563878-1	1-1564532-1	1-1564530-1
		Gray	2-1563878-1	2-1564532-1	2-1564530-1
		Green	3-1563878-1	3-1564532-1	3-1564530-1
		Blue	4-1563878-1	4-1564532-1	4-1564530-1
16	(12x) 1.5K (4x) 2.8	Black	1-1564337-1	1-1564407-1	1-1564528-1
		Gray	2-1564337-1	2-1564407-1	2-1564528-1
		Green	3-1564337-1	3-1564407-1	3-1564528-1
		Blue	4-1564337-1	4-1564407-1	4-1564528-1
18	(18x) 1.5K	Black	1-1563759-1	1-1564526-1	1-1564412-1
		Gray	2-1563759-1	2-1564526-1	2-1564412-1
		Green	3-1563759-1	3-1564526-1	3-1564412-1
		Blue	4-1563759-1	4-1564526-1	4-1564412-1

Heavy Duty Sealed Connector Series Housings
CAN Bus Housings

Heavy duty sealed connector series CAN bus Y-Connector and 120(ohm) Resistor connectors are key for CAN signal communication systems in vehicles or machinery on the farm, construction sites, and on-/off-road applications. They meet CAN bus protocol specifications according to SAE J1939 standard and are fully compatible with our heavy duty sealed connector series accessories and parts, including the heavy duty sealed connector series 3-position plug and backshell/dust cap.

SAE J 1939 CAN-BUS NETWORK ARCHITECTURE



Heavy Duty Sealed Connector Series

CAN Bus

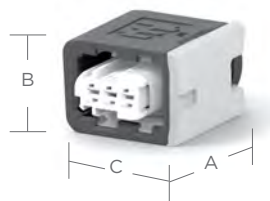
**CAN BUS
HOUSINGS**



**CAN BUS
SIZE CONFIGURATIONS**



3 Positions
3 size 1.5K



DIMENSIONS

120Ω Resistor Receptacle Housing			Y-Connector Tab Housing		
Overall Length A	Overall Height B	Overall Width C	Overall Length D	Overall Height E	Overall Width F
30.75 mm (1.211")	18.5 mm (0.728")	26.0 mm (1.02")	53.1 mm (2.09")	25.9 mm (1.02")	42.4 mm (1.67")

ORDERING INFORMATION

Positions	Contacts	Keying Type	Color	Part Number
3	(2x) 1.5K (1x) 120Ω Resistor	X	White	2306960-1
3 / 3 / 3	(3x) 1.5K (3x) 1.5K (3x) 1.5K	A / B / C	Black	2278730-1
		A / A / A		2278730-2

Heavy Duty Sealed Connector Series

Accessories

Several accessory items are available to complement the heavy duty sealed connector series, including backshells, fixing slides, and protection caps. Accessory items cover a wide array of design requirements such as assisting with mounting, providing additional protection, and offering enhanced aesthetics.

BACKSHELLS

Backshells attach to the back of a connector to provide additional protection against environmental conditions as well as provide additional strain relief to the wire bundle.



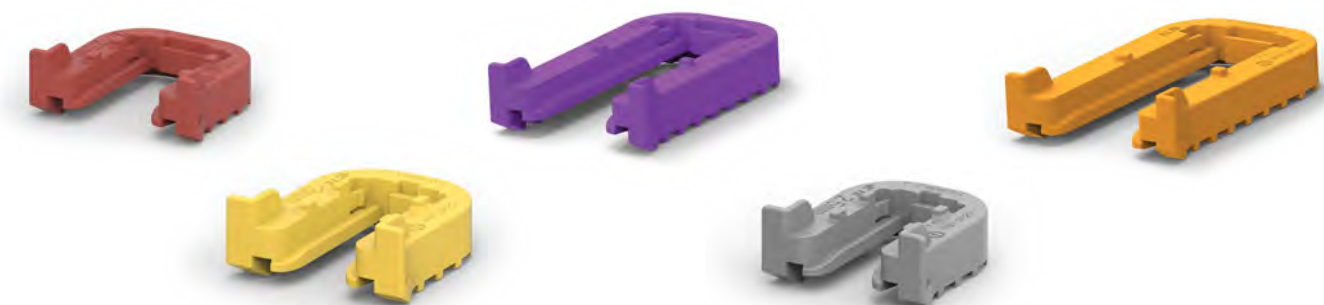
Group	Description	Part Number
A	Vertical adapter for NW 8.5 mm corrugated tubing	1670365-1
	Right-angle adapter for NW 8.5 mm corrugated tubing	1670150-1
B	Right-angle adapter with universal clamp	965576-1
	Vertical adapter with universal clamp	965784-1
	Right-angle adapter for NW 7.5 mm corrugated tubing	185793-1
	Right-angle adapter for NW 8.5 mm corrugated tubing	965577-1
	Right-angle adapter for NW 10 mm corrugated tubing	965783-1
	Vertical adapter for NW 7.5 mm corrugated tubing	185792-1
	Vertical adapter for NW 8.5 mm corrugated tubing	965785-1
	Vertical adapter for NW 10 mm corrugated tubing	965786-1
	Right-angle adapter 4/7 position for hose	1534789-1
	Vertical adapter 4/7 position for hose	1534791-1
	Vertical adapter 4/7 position for jacketed cable 5.2-6.5 mm	1418916-1
	Vertical adapter 4/7 position for jacketed cable 6.0-9.5 mm	1418917-1
	Right-angle adapter 4/7 position for jacketed cable 5.2-6.5 mm	1418918-1
	Right-angle adapter 4/7 position for jacketed cable 6.0-9.5 mm	1418919-1
C	Vertical adapter for NW 13 mm corrugated tubing	1670364-1
	Right-angle adapter for NW 13 mm corrugated tubing	1670057-1
D	Vertical adapter for NW 13 mm corrugated tubing	1563111-1
	Right-angle adapter for NW 13 mm corrugated tubing	1563110-1
E	Vertical adapter for NW 17 mm corrugated tubing and hose	1670866-1
	Right-angle adapter for NW 17 mm corrugated tubing and hose	1670865-1

Heavy Duty Sealed Connector Series

Accessories

FIXING SLIDES

Fixing slides are used to help secure heavy duty sealed connectors while mounting them. The locking slides can accommodate panel thicknesses from 1.0-3.5 mm.



Group	Color	Panel Thickness (mm)	Part Number
A	Red	2.50	1703838-2
	Yellow	3.00	1703838-1
	Gray	3.50	1703838-6
B	Red	2.50	1703810-2
	Yellow	3.00	1703810-1
	Gray	3.50	1703810-6
C	Gray	1.50	1670720-5
	Green	1.60	1670720-8
	Red	2.50	1670720-2
	Yellow	3.00	1670720-1
	Gray	3.50	1670720-6
D	Natural	1.00	1564562-4
	Orange	1.20	2317070-1
	Gray	1.50	1564562-5
	Red	2.50	1564562-2
	Yellow	3.00	1564562-1
	Gray	3.50	1564562-6
E	Orange	1.20	2316939-1
	Gray	1.50	1564411-5
	Green	1.60	1564411-8
	Violet	2.00	1564411-7
	Red	2.50	1564411-2
	Yellow	3.00	1564411-1
	Gray	3.50	1564411-6

*Other configurations available upon request. Please contact TE for additional information.

Heavy Duty Sealed Connector Series
Accessories

PROTECTION CAPS

Heavy duty sealed connector series protection caps provide an environmental seal and are used to protect the connector interface when the two halves are not mated.



Group	Housing	Part Number
A	Receptacle	2112299-1
	Tab	2112289-1
B	Receptacle	2112300-1
	Tab	2112291-1
C	Receptacle	2112301-1
	Tab	2112293-1
D	Receptacle	2112302-1
	Tab	2112295-1
E	Receptacle	2112303-1
	Tab	2112297-1

Heavy Duty Sealed Connector Series

Contacts

Heavy duty sealed connectors utilize the common AMP MCP stamped & formed contact system.



AMP MCP CONTACT PERFORMANCE SPECIFICATIONS

Durability

10 cycles (tin)
50 cycles (silver)
100 cycles (gold)

Current Rating

Contact Size	Max Current
1.5K	Up to 20 A
2.8	Up to 40 A
6.3/4.8K	Up to 40 A

Contact Retention

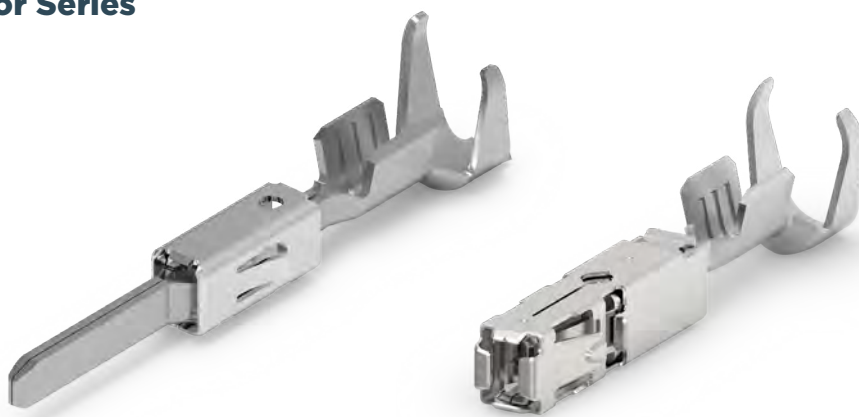
Contact Size	Min. Load
1.5K	40/60 N
2.8	80 N
6.3/4.8K	80 N

Crimp Tensile Strength

Contact Size	Tensile Strength
1.5K	
.22 mm ²	≥ 32 N
.35 mm ²	≥ 50 N
.50 mm ²	≥ 60 N
.75 mm ²	≥ 85 N
1.0 mm ²	≥ 108 N
1.25 mm ²	≥ 135 N (16 AWG)
1.5 mm ²	≥ 135 N
2.8	
.22 mm ²	≥ 28 N
.35 mm ²	≥ 50 N
.50 mm ²	≥ 60 N
.75 mm ²	≥ 85 N
1.0 mm ²	≥ 108 N
1.5 mm ²	≥ 150 N
2.5 mm ²	≥ 200 N
6.3/4.8K	
.35 mm ²	≥ 50 N
.50 mm ²	≥ 60 N
.75 mm ²	≥ 85 N
1.0 mm ²	≥ 108 N
1.5 mm ²	≥ 150 N
2.5 mm ²	≥ 200 N
4.0 mm ²	≥ 310 N
6.0 mm ²	≥ 450 N

Heavy Duty Sealed Connector Series

Contacts



AMP MCP 1.5K CONTACTS

Stamped & Formed Tabs and Receptacles with Single Wire Sealing System

1.5K	Wire Size (mm ²)	Insulation Diameter FLR (mm)	Strip Form Part Number	Loose Piece Part Number	Finish Code
Receptacle Contacts	0.2-0.35	1.1-1.4	1564324	1564325	-1; -2; -3
	0.5-1.0	1.4-2.1	1241380*	1241381	-1; -2; -3; 1-x-2*
	>1.0-1.5	1.9-2.4	1418884	1418885	-1; -3
Tab Contacts	0.2-0.5	1.15-1.6	969028	969029	-2; -3; -5
			963902	963903	-1; -2; -3
	0.35		2141884*	2141885	-2; -3; -5; 2-x-2*
	0.5-1.0	1.4-2.1	963904	963905	-1; -2; -3
			964269*	964270	-2; -3; -5; 2-x-2*
	1.5	1.95-2.4	1703278	1703279	-2; -5

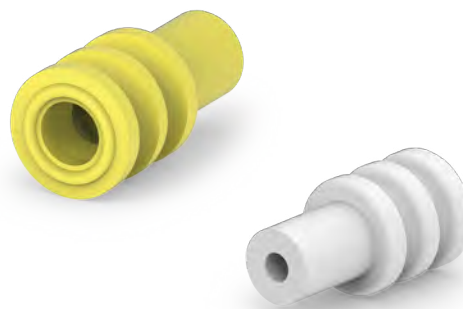
Material and Finish Codes with "*" are only available on their corresponding strip form or loose piece part number.

AMP MCP 1.5K TERMINAL MATERIAL AND FINISH CODES

	Finish Code	-1	-2	-3	-5	1-x-2	2-x-2
Receptacle Contacts	Material	CuNiSi	CuNiSi	CuNiSi	*	CuNiSi	*
	Plating	Pre-Tin	Select Gold	Select Silver	*	1.27um Select Gold	*
Tab Contacts	Finish Code	-2	-3	-5	1-x-1	1-x-2	1-x-3
	Material	CuSn4	CuFe2	CuSn4	CuSn4	CuFe2	CuFe2
	Plating	Pre-Tin	Pre-Tin	Select Gold	Select Silver	Select Silver	Select Silver

*Other configurations available upon request. Please contact TE for additional information.

Heavy Duty Sealed Connector Series
Wire Seals & Sealing Plugs



AMP MCP 1.5K WIRE SEALS

Wire Seals are required for connectors without an integrated rear seal to maintain an environmental seal.

Insulation Diameter (mm)	Cavity Size (mm)	Color	Part Number
0.9-1.2	3.6	Green	1718705-1
		Red	1718705-2
1.2-1.6		Red	964971-1
		Blue	1394133-1
1.4-1.9		Green	963530-1
1.9-2.4		Yellow	964972-1
2.2-2.4		Orange	2112323-1 [†]
		Green	2287497-1 [†]

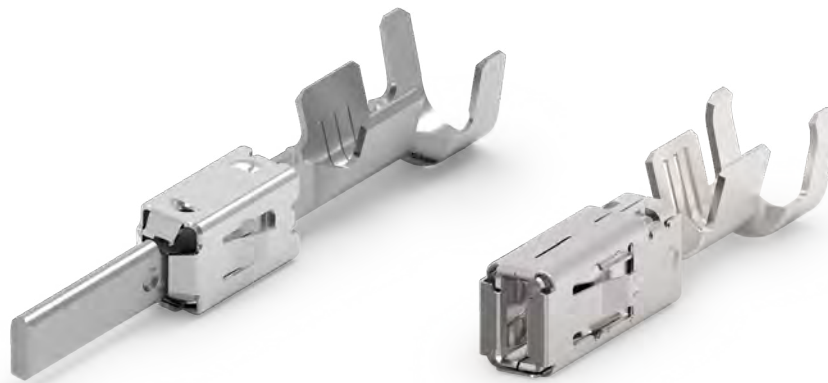
[†] For cable with insulation diameter between 2.2 - 2.4mm, wire seal 2287497-1 is preferred, with improved insertion performance into housing. Reduced 120°C temperature limit. 2112323-1 has 140°C temperature limit but increased insertion forces into housing.

AMP MCP 1.5K SEALING PLUGS

Open cavities provide pathways for contaminants to enter the connectors. To maintain seal integrity, any unused cavity must be filled with the appropriate size sealing plug.

Cavity Size (mm)	Color	Part Number
3.6	White	963531-1
	Natural	1394132-1

Heavy Duty Sealed Connector Series
Contacts



AMP MCP 2.8 CONTACTS

Stamped & Formed Tabs and Receptacles with Single Wire Sealing System

2.8	Wire Size (mm ²)	Insulation Diameter FLR (mm)	Strip Form Part Number	Loose Piece Part Number	Material/Finish Codes
Receptacle Contacts	0.2-0.5	1.2-1.4	2141859	-	1-x-1; 1-x-2; 1-x-3
	0.5-1.0	1.4-2.1	968855	968875	1-x-1; 1-x-2; 1-x-3
	1.5-2.5	2.2-3.0	968857*	968876	1-x-1; 1-x-2*; 1-x-3; 2-x-3
	12 AWG	3.0-3.8	1719506	-	1-x-1; 1-x-3
Tab Contacts	0.2-0.5	max 2.1	965982	965983	1-x-1; 1-x-3
	0.5-1.0	max 2.1	962915*	963748	1-x-1; 1-x-2; 1-x-3; 2-x-1; 2-x-2; 2-x-3; 6-x-6*
	>1.0-2.5	max 3.0	962916	963749	1-x-1; 1-x-2; 1-x-3; 2-x-1; 2-x-2; 2-x-3
	>2.5-4.0	max 3.7	968947	968966	1-x-1; 1-x-2; 2-x-1; 2-x-2; 3-x-1
	12 AWG	max 3.0	1719504	1719503	1-x-1; 1-x-2

Material and Finish Codes with "*" are only available on their corresponding strip form or loose piece part number.

AMP MCP 2.8 TERMINAL MATERIAL AND FINISH CODES

	Finish Code	1-x-1	1-x-2	1-x-3	2-x-1	2-x-2	2-x-3	3-x-1	6-x-6
Receptacle Contacts	Material	CuNiSi	CuNiSi	CuNiSi	*	*	CuNiSi	*	*
	Plating	Pre-Tin	Select Gold	Select Silver	*	*	Select Silver	*	*
Tab Contacts	Material	CuSn4	CuSn4	CuSn4	CuFe	CuFe	CuFe	CuSn 0.20	CuSn4
	Plating	Pre-Tin	Select Silver	Select Gold	Pre-Tin	Select Silver	Select Gold	Pre-Tin	Select Gold

*Other configurations available upon request. Please contact TE for additional information.

Heavy Duty Sealed Connector Series
Wire Seals & Sealing Plugs



AMP MCP 2.8 WIRE SEALS

Wire Seals are required for connectors without an integrated rear seal to maintain an environmental seal.

Insulation Diameter (mm)	Cavity Size (mm)	Color	Part Number
1.2-2.1	5.6	Light Blue	828904-1
			828904-2
			828904-3
2.2-3.0		White	828905-1

AMP MCP 2.8 SEALING PLUGS

Open cavities provide pathways for contaminants to enter the connectors. To maintain seal integrity, any unused cavity must be filled with the appropriate size sealing plug.

Cavity Size (mm)	Color	Part Number
5.4	Natural	828922-1
	Green	828922-2

Heavy Duty Sealed Connector Series
Contacts



AMP MCP 6.3/4.8K CONTACTS

Stamped & Formed Tabs and Receptacles with Single Wire Sealing System

6.3/4.8K	Wire Size (mm ²)	Insulation Diameter FLR (mm)	Strip Form Part Number	Loose Piece Part Number	Material/Finish Codes
Receptacle Contacts	0.35-0.5	1.2-2.3	1241410*	1241411	-1; -3*; 5-x-1*; 5-x-3*
	0.5-1.0	1.4-2.7	1241412	1241413	-1; -3
	>1.0-2.5	2.2-3.7	1241414	1241415	-1; -3
	>2.5-4.0	3.4-4.5	1241416	1241417	-1; -3
	4.0-6.0	3.4-4.3	1241418*	1241419	-4; 1-x-3; 2-x-3*
Tab Contacts	0.5-1.0	1.4-2.1	962917	963742	1-x-1; 1-x-2; 2-x-1
	>1.0-2.5	2.2-3.0	962918	963743	1-x-1; 1-x-2; 2-x-1; 2-x-2
	4.0	2.7-3.7	962919	963744	1-x-1; 1-x-2; 2-x-2
	6.0, 10 AWG	4.0-4.3	2112966	2112965	2-x-2

Material and Finish Codes with "*" are only available on their corresponding strip form or loose piece part number.

AMP MCP 6.3/4.8K TERMINAL MATERIAL AND FINISH CODES

	Finish Code	-1	-3	-4	1-x-1	1-x-2	1-x-3	2-x-1	2-x-2	2-x-3	5-x-1	5-x-3
Receptacle Contacts	Material	CuNiSi			*	*	CuNiSi	*	*	CuNiSi		
	Plating	Pre-Tin	Select Silver	Pre-Tin	*	*	Select Silver	*	*	Select Silver	Pre-Tin	Select Silver
Tab Contacts	Material	*	*	*	CuSn4		*	CuFe2		*	*	*
	Plating	*	*	*	Pre-Tin	Select Silver	*	Pre-Tin	Select Silver	*	*	*

*Other configurations available upon request. Please contact TE for additional information.

Heavy Duty Sealed Connector Series
Wire Seals & Sealing Plugs



AMP MCP 6.3/4.8K WIRE SEALS

Wire Seals are required for connectors without an integrated rear seal to maintain an environmental seal.

Insulation Diameter (mm)	Cavity Size (mm)	Color	Part Number
1.4-2.0	8.5	Yellow	2177018-1
2.0-2.7		White	1394511-1
2.7-3.0		Red-Brown	1823111-1
3.4-3.7		Blue	1394512-1
4.0-4.5		Green	1719043-1

AMP MCP 6.3/4.8K SEALING PLUGS

Open cavities provide pathways for contaminants to enter the connectors. To maintain seal integrity, any unused cavity must be filled with the appropriate size sealing plug.

Cavity Size (mm)	Color	Part Number
8.5	Transparent	967652-1

Heavy Duty Sealed Connector Series

for Industrial & Commercial Transportation

Heavy Duty Sealed Connector Series

Tooling

Tools are specific to each contact style. To create a proper crimp and achieve the highest performance specifications, contacts must be crimped with the recommended tooling.



HAND TOOL FOR AMP MCP CONTACTS

Contact Size	Contact Type	Strip Form Part Number	Loose Piece Part Number	Hand Tool Part Number	Die Set Part Number
1.5K	Receptacle	1564324	1564325	539635-1	4-1579016-0
		1241380	1241381		539950-2
		1418884	1418885		5-1579001-3
	Tab	969028	969029		539663-2
		963902	963903		539651-2
		2141884	2141885		539663-2
		963904	963905		539651-2
		964269	964270		539663-2
		1703278	1703279		-
		-	-		-
2.8	Receptacle	2141859	-	-	-
		968855	968875	539635-1	539726-2
		968857	968876		539727-2
		1719506	-	-	-
	Tab	965982	965983	539635-1	539737-2
		962915	963748		539758-2
		962916	963749		539758-2
		968947	968966		539727-2
		1719504	1719503		-
		-	-		-
6.3 / 4.8K	Receptacle	1241410	1241411	539635-1	539955-2
		1241412	1241413		539955-2
		1241414	1241415		539956-2
		1241416	1241417		539956-2
		1241418	1241419		3-1579021-7
	Tab	962917	963742		539757-2
		962918	963743		539757-2
		962919	963744		539757-2
		2112966	2112965		-
		-	-		-

Other tooling configurations available upon request. Please contact TE for additional information.

Heavy Duty Sealed Connector Series
Automated for AMP MCP Contacts



OCEAN 2.0 Applicator

Contact Size	Contact Type	Strip Form Part Number	Feed	Type	Applicator Part Number
1.5K	Receptacle	1564324	Side	Mechanical	2151469-1
		1241380		Pneumatic	2151469-2
		1418884		Mechanical	2151064-1
				Pneumatic	2151064-2
				Mechanical	2151424-1
				Pneumatic	2151424-2
	Tab	969028		Mechanical	2151056-1
		963902		Pneumatic	2151056-2
		2141884		Mechanical	2151167-1
		963904		Pneumatic	2151167-2
		964269		Mechanical	2151056-1
		1703278		Pneumatic	2151056-2
				Mechanical	2151170-1
				Pneumatic	2151170-2
2.8	Receptacle	2141859	Side	-	-
		968855		Mechanical	2151227-1
		968857		Pneumatic	2151227-2
		1719506		Mechanical	2151346-1
				Pneumatic	2151346-2
				Mechanical	2836789-1
	Tab	965982		Pneumatic	2836789-2
		962915		Mechanical	2151840-1
		962916		Pneumatic	2151840-2
		968947		Mechanical	2151181-1
		1719504		Pneumatic	2151181-2
				Mechanical	2151260-1
				Pneumatic	2151260-2
				Mechanical	2151173-1
	Pneumatic	2151173-2			
	Mechanical	2836092-1			
	Pneumatic	2836092-2			

Other tooling configurations available upon request. Please contact TE for additional information.

Heavy Duty Sealed Connector Series

for Industrial & Commercial Transportation

Heavy Duty Sealed Connector Series

Automated for AMP MCP Contacts (continued)



OCEAN 2.0 Applicator

Contact Size	Contact Type	Strip Form Part Number	Feed	Type	Applicator Part Number
6.3 / 4.8K	Receptacle	1241410	Side	Pneumatic	2151695-2
		1241412		Pneumatic	2151234-2
		1241414		Pneumatic	2151177-2
		1241416		Pneumatic	2151151-2
		1241418		Mechanical	2151466-1
				Pneumatic	2151466-2
	Tab	962917		Pneumatic	2266535-2
		962918		Pneumatic	2151783-2
		962919		Pneumatic	2151782-2
		2112966		Pneumatic	2151841-2

Other tooling configurations available upon request. Please contact TE for additional information.

EXTRACTION AND INSERTION TOOLS FOR AMP MCP CONTACTS

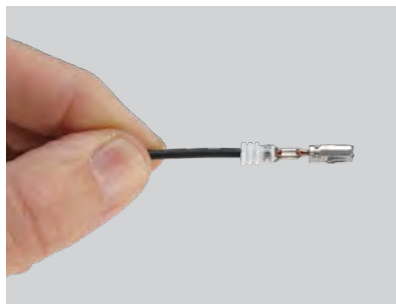
Contact Size	Contact Type	Tool Type	Part Number
1.5K	Receptacle	Insertion	5-1579018-6
		Extraction	1-1579007-1
	Tab	Extraction	539960-1
2.8	Receptacle	Insertion	519609-1
		Extraction	1579007-1
	Tab	Extraction	1-1579007-6
6.3 / 4.8K	Receptacle	Insertion	6-1579018-3
		Extraction	1-1579007-3
	Tab	Extraction	1-1579007-6



Heavy Duty Sealed Connector Series

How-To Instructions

CONTACT INSERTION



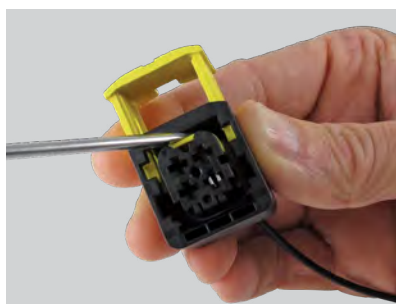
Step 1:
Grasp crimped contact approximately one inch behind the contact barrel.



Step 2:
Make sure the contact is in the correct orientation. Verify the integrated secondary lock is in the unlocked position.

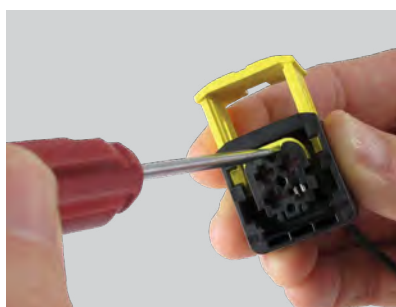


Step 3:
Push contact straight into connector grommet until a click is felt. A slight tug will confirm that it is properly locked in place.

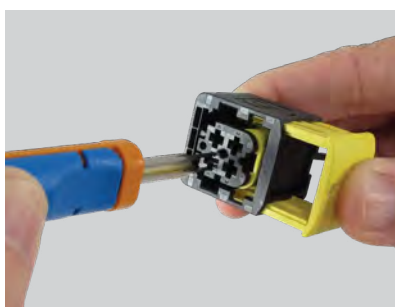


Step 4:
Push the integrated secondary lock into the locked position with a DT-RT1 or a screwdriver.

CONTACT REMOVAL



Step 1:
Using a DT-RT1 or a screwdriver, unlock the integrated secondary lock.



Step 2:
Using the appropriate extraction tool, insert the blades into the contact cavity until they stop.



Step 3:
Pull contact wire assembly out of connector.

Heavy Duty Sealed Connector Series
Index

BACKSHELLS

185792 16
 185793 16
 965576 16
 965577 16
 965783 16
 965784 16
 965785 16
 965786 16
 1418916 16
 1418917 16
 1418918 16
 1418919 16
 1534789 16
 1534791 16
 1563110 16
 1563111 16
 1670057 16
 1670150 16
 1670364 16
 1670365 16
 1670865 16
 1670866 16

CONTACTS

962915 22, 26, 27
 962916 22, 26, 27
 962917 24, 26, 28
 962918 24, 26, 28
 962919 24, 26, 28
 963742 24, 26
 963743 24, 26
 963744 24, 26
 963748 22, 26
 963749 22, 26
 963902 20, 26, 27
 963903 20, 26
 963904 20, 26, 27
 963905 20, 26
 964269 20, 26, 27
 964270 20, 26
 965982 22, 26, 27
 965983 22, 26
 968855 22, 26, 27
 968857 22, 26, 27
 968875 22, 26
 968876 22, 26
 968877 22, 26
 968947 22, 26, 27
 968966 22, 26
 969028 20, 26, 27
 969029 20, 26
 1241380 20, 26, 27
 1241381 20, 26
 1241410 24, 26, 28
 1241411 24, 26
 1241412 24, 26, 28
 1241413 24, 26
 1241414 24, 26, 28
 1241415 24, 26
 1241416 24, 26, 28
 1241417 24, 26
 1241418 24, 26, 28
 1241419 24, 26
 1418884 20, 26, 27
 1418885 20, 26
 1564324 20, 26, 27
 1564325 20, 26
 1703278 20, 26, 27
 1703279 20, 26
 1719503 22, 26
 1719504 22, 26, 27
 1719506 22, 26, 27
 2112965 24, 26
 2112966 24, 26, 28
 2141859 22, 26, 27
 2141884 20, 26, 27
 2141885 20, 26

FIXING SLIDES

1564411 17
 1564562 17
 1670720 17
 1703810 17
 1703838 17
 2316939 17
 2317070 17

HOUSINGS

1418390 9
 1418437 10
 1418448 8, 14
 1418469 9
 1418479 10
 1418480 10
 1418483 8
 1563759 13
 1563878 13
 1564330 12
 1564337 13
 1564407 13
 1564412 13
 1564414 11
 1564416 10
 1564512 10
 1564514 11
 1564516 11
 1564518 11
 1564520 11
 1564522 11
 1564526 13
 1564528 13
 1564530 13
 1564532 13
 1564534 12
 1564536 12
 1564542 10
 1564544 10
 1564546 10
 1670214 10
 1670730 8, 14
 1670894 11
 1670901 12
 1703639 11
 1703648 10
 1703773 9
 1703808 9
 1703818 9
 1703820 9
 1703839 8
 1703841 8
 1703843 8, 14
 2208157 11
 2278730 14, 15
 2299782 12
 2306960 14, 15

Heavy Duty Sealed Connector Series Index

PROTECTION CAPS

2112289	18
2112291	18
2112293	18
2112295	18
2112297	18
2112299	18
2112300	18
2112301	18
2112302	18
2112303	18

SEALING PLUGS

828922	23
963531	21
967652	25
1394132	21
TOOLING	
519609	28
539635	26
539651	26
539663	26
539726	26
539727	26
539737	26
539757	26
539758	26
539950	26
539955	26
539956	26
539960	28
1579001	26
1579007	28
1579016	26
1579018	28
1579021	26
2151056	27
2151057	27
2151064	27
2151151	28
2151167	27
2151170	27
2151173	27
2151177	28
2151181	27
2151227	27
2151234	28
2151260	27
2151346	27
2151424	27
2151466	28
2151469	27
2151695	28
2151701	27
2151782	28
2151783	28
2151840	27
2151841	28
2266535	28
2836092	27
2836789	27

WIRE SEALS

828904	23
828905	23
963530	21
964971	21
964972	21
1394133	21
1394511	25
1394512	25
1718705	21
1719043	25
1823111	25
2112323	21
2177018	25
2287497	21

ABOUT TE CONNECTIVITY

TE Connectivity is a \$12 billion global industrial technology leader creating a safer, sustainable, productive and connected future. Our broad range of connectivity and sensor solutions, proven in the harshest environments, enable advancements in transportation, industrial applications, medical technology, energy, data communications and the home. With approximately 80,000 employees, including more than 7,500 engineers, working alongside customers in approximately 140 countries, TE ensures that EVERY CONNECTION COUNTS. Learn more at www.te.com and on LinkedIn, Facebook, WeChat and Twitter.

CONNECT WITH US

We make it easy to connect with our experts and are ready to provide all the support you need. For additional information or product assistance, please contact your field representative or our customer service department. Additional information is also available on the website te.com/ict.

TECHNICAL SUPPORT

www.te.com/support

United States +1 800 522 6752

Germany +49 6151 607 1999

China +86 400 820 6015

Japan +86 044 844 8052

te.com/ict

AMP MCP, OCEAN, TE Connectivity, TE connectivity (logo) and EVERY CONNECTION COUNTS are trademarks owned or licensed by the TE Connectivity Ltd. family of companies.

All other logos, products and/or company names referred to herein might be trademarks of their respective owners.

The information given herein, including drawings, illustrations and schematics which are intended for illustration purposes only, is believed to be reliable. However, TE Connectivity makes no warranties as to its accuracy or completeness and disclaims any liability in connection with its use. TE Connectivity's obligations shall only be as set forth in TE Connectivity's Standard Terms and Conditions of Sale for this product and in no case will TE Connectivity be liable for any incidental, indirect or consequential damages arising out of the sale, resale, use or misuse of the product. Users of TE Connectivity products should make their own evaluation to determine the suitability of each such product for the specific application.

© 2021 TE Connectivity Ltd. family of companies | All Rights Reserved.

ict-hdscs-cat-a4-1-1773971-7-en 06-2021

TE Connectivity

4849 Hempstead Station Drive
Kettering, OH 45429
USA