



INTERCONTEC
信号连接器 615 系列
电源连接器 915 系列

INTERCONTEC
SIGNAL CONNECTORS SERIES 615
POWER CONNECTORS SERIES 915

ytec · itec
SELF LOCKING SYSTEM



德国制造高科技产品 High-tech made in Germany

我们的使命是，开发适用于多种应用的卓越信号、现场总线和电源连接器。

凭借专业技能和市场专业知识，我们挑战现有标准。我们以远见卓识来确定未来的连接器技术，为我们的客户提供创新性和以市场为导向的解决方案。

我们的连接器遵循高度精密的工程原理，确保极其简单和高效的装配过程。

通过精心设计高度用户友好的优质系统解决方案，并在很短的时间内将其推向市场，我们迅速响应客户的需求。这是 TE Connectivity 和 Intercontec 产品的关键优势。

It is our mission to develop outstanding signal, fieldbus and power connectors for a wide range of applications.

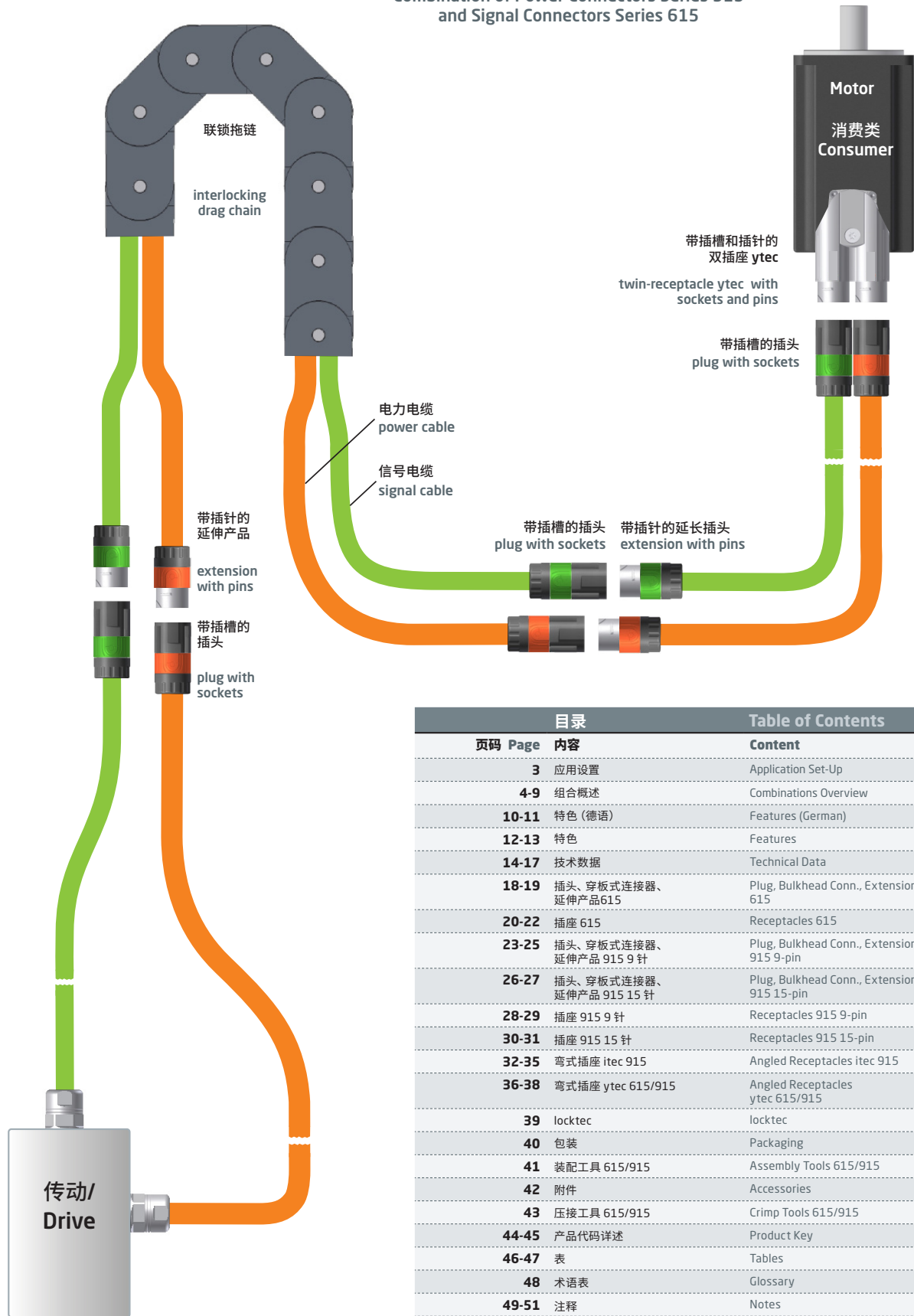
With know-how and market expertise we challenge existing standards. We take a visionary approach to determine the connector technology of the future to provide our customers with innovative and market-oriented solutions.

Our connectors follow highly sophisticated engineering principles safeguarding an extremely easy and efficient assembly process.

By elaborating highly user-friendly optimum system solutions which are brought to the market in a very short time we quickly respond to our customers' needs. This is the key strength of TE Connectivity and the INTERCONTEC products.

电源连接器 915 系列
和信号连接器 615 系列组合

Combination of Power Connectors Series 915
and Signal Connectors Series 615



目录		Table of Contents	
页码 Page	内容	Content	
3	应用设置	Application Set-Up	
4-9	组合概述	Combinations Overview	
10-11	特色 (德语)	Features (German)	
12-13	特色	Features	
14-17	技术数据	Technical Data	
18-19	插头、穿板式连接器、延伸产品 615	Plug, Bulkhead Conn., Extensions 615	
20-22	插座 615	Receptacles 615	
23-25	插头、穿板式连接器、延伸产品 915 9 针	Plug, Bulkhead Conn., Extensions 915 9-pin	
26-27	插头、穿板式连接器、延伸产品 915 15 针	Plug, Bulkhead Conn., Extensions 915 15-pin	
28-29	插座 915 9 针	Receptacles 915 9-pin	
30-31	插座 915 15 针	Receptacles 915 15-pin	
32-35	弯式插座 itec 915	Angled Receptacles itec 915	
36-38	弯式插座 ytec 615/915	Angled Receptacles ytec 615/915	
39	locktec	locktec	
40	包装	Packaging	
41	装配工具 615/915	Assembly Tools 615/915	
42	附件	Accessories	
43	压接工具 615/915	Crimp Tools 615/915	
44-45	产品代码详述	Product Key	
46-47	表	Tables	
48	术语表	Glossary	
49-51	注释	Notes	

ytec · itec

SELF LOCKING SYSTEM

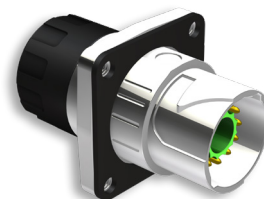
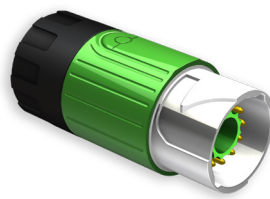
插头
Plug 页码18
p. 18



穿板式连接器
Bulkhead Connector 页码18
p. 18

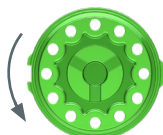


延伸产品
Extension 页码18
p. 18

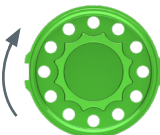


绝缘塑芯
Insulation Inserts

12 针 (12 x Ø 1 mm)
12-pin (12 x Ø 1 mm)



12 针 (12 x Ø 1 mm)
12-pin (12 x Ø 1 mm)

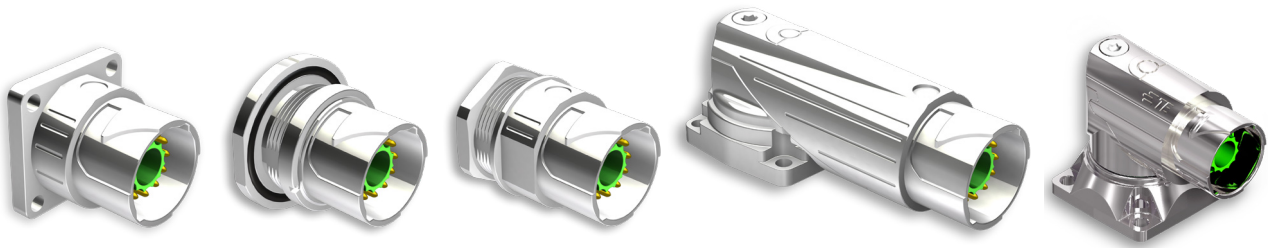


转向公端或母端压接端子
turned male or female crimp contacts

itec
CONNECTOR

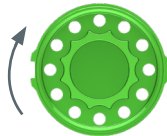
插座
Receptacles p. 20

弯式插座
Receptacle Angled p. 21

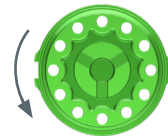


绝缘塑芯
Insulation Inserts

12 针 (12 x Ø 1 mm)
12-pin (12 x Ø 1 mm)



12 针 (12 x Ø 1 mm)
12-pin (12 x Ø 1 mm)



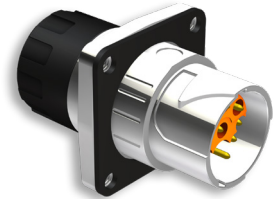
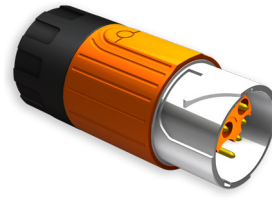
转向公端或母端压接端子
turned male or female crimp contacts

ytec · itec
SELF LOCKING SYSTEM

插头
Plug 页码23-27
p. 23-27

穿板式连接器
Bulkhead Connector 页码23-27
p. 23-27

延伸产品
Extension 页码23-27
p. 23-27



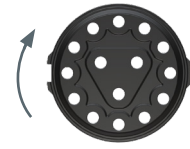
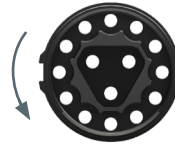
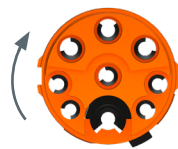
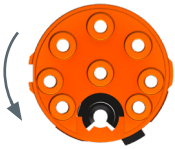
绝缘塑芯
Insulation Inserts

9 针公端 [9 x Ø 1 mm (3+PE+5)]
9-pin male [9 x Ø 1 mm (3+PE+5)]

9 针母端 [9 x Ø 1 mm (3+PE+5)]
9-pin female [9 x Ø 1 mm (3+PE+5)]

15 针公端 [15 x Ø 1 mm (12+3)]
15-pin male [15 x Ø 1 mm (12+3)]

15 针母端 [15 x Ø 1 mm (12+3)]
15-pin female [15 x Ø 1 mm (12+3)]



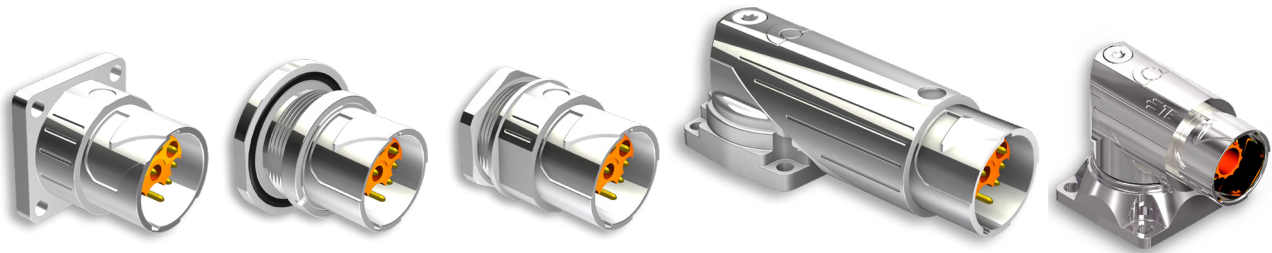
转向公端或母端压接端子
turned male or female crimp contacts

itec

CONNECTOR

插座
Receptacles 页码28-31
p. 28-31

弯式插座
Receptacle Angled 页码32-35
p. 32-35



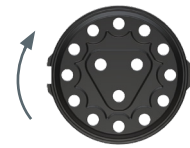
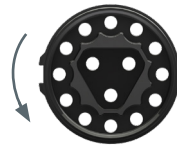
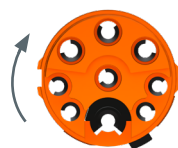
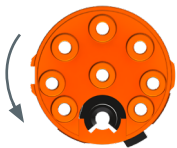
绝缘塑芯
Insulation Inserts

9 针公端 [9 x Ø 1 mm (3+PE+5)]
9-pin male [9 x Ø 1 mm (3+PE+5)]

9 针母端 [9 x Ø 1 mm (3+PE+5)]
9-pin female [9 x Ø 1 mm (3+PE+5)]

15 针公端 [15 x Ø 1 mm (12+3)]
15-pin male [15 x Ø 1 mm (12+3)]

15 针母端 [15 x Ø 1 mm (12+3)]
15-pin female [15 x Ø 1 mm (12+3)]

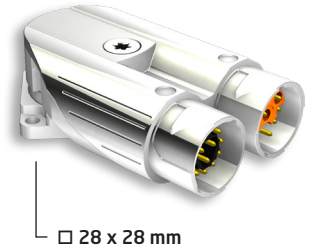
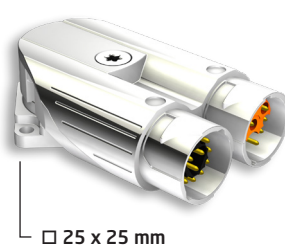
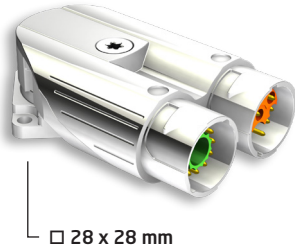
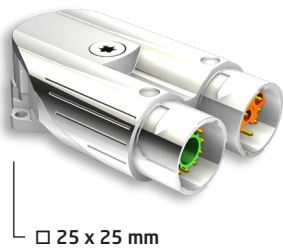


转向公端或母端压接端子
turned male or female crimp contacts

ytec
CONNECTOR

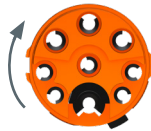
双弯式插座
Double-Receptacles Angled

页码36-38
p. 36-38

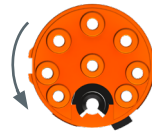


绝缘插头
Insulation Inserts

9 针公端 [9 x Ø 1 mm (3+PE+5)]
9-pin male [9 x Ø 1 mm (3+PE+5)]

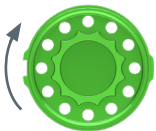


9 针母端 [9 x Ø 1 mm (3+PE+5)]
9-pin female [9 x Ø 1 mm (3+PE+5)]

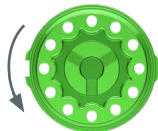


+

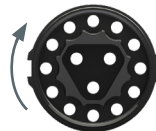
12 针公端 (12 x Ø 1 mm)
12-pin male (12 x Ø 1 mm)



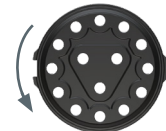
12 针母端 (12 x Ø 1 mm)
12-pin female (12 x Ø 1 mm)



15 针公端 [15 x Ø 1 mm (12+3)]
15-pin male [15 x Ø 1 mm (12+3)]



15 针母端 [15 x Ø 1 mm (12+3)]
15-pin female [15 x Ø 1 mm (12+3)]



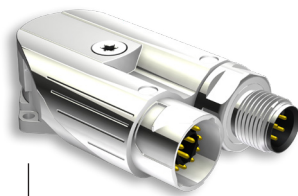
转向公端或母端压接端子

turned male or female crimp contacts

ytec
CONNECTOR

双弯式插座
Double-Receptacles Angled

页码38
p. 38



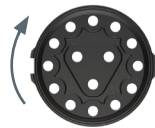
□ 25 x 25 mm



□ 28 x 28 mm

绝缘塑芯
Insulation Inserts

15 针 [15 x Ø 1 mm (12+3)]
15-pin [15 x Ø 1 mm (12+3)]



M12 绝缘塑芯
M12 Insulation Insert



转向压接端子插针
turned crimp contact pins

焊针
solder pins

便于安装, 最小入侵

由于便于组装的优质盖分隔和足够空间,因此安装触点将变得前所未有的简单!ytec 系统只需要一个安装孔,并提供 25 和 28 这两种不同的法兰尺寸。

itec 连接器、 ytec 单一解决方案

itec 连接器适用于所有 ytec 插针布局,
并且与所有插接 ytec 插头兼容。

灵活性高, 空间要求低

可以 4 个不同的角度 (0°、90°、180° 和 270°)
安装 ytec 连接器系统
此外,安装后,系统可 300° 无限旋转。

ytec · itec

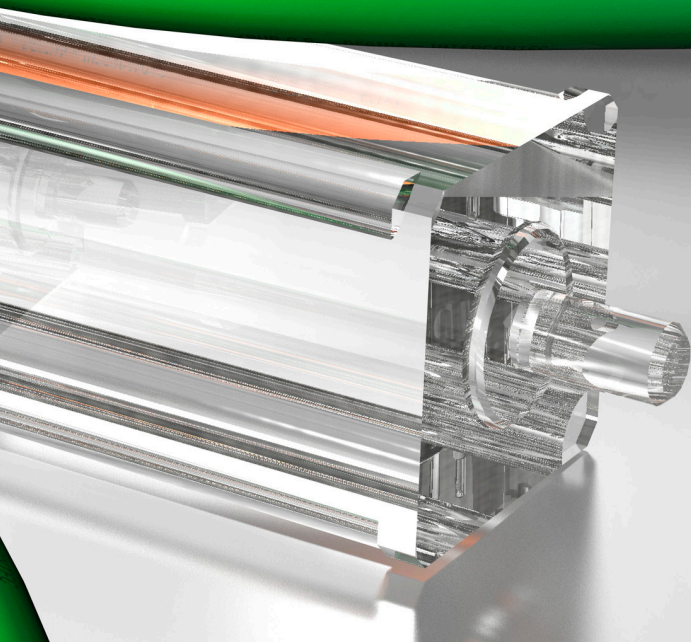
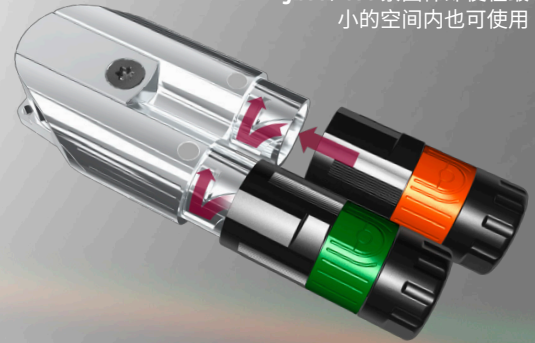
自锁系统

简单便捷。

ytec、itec 连接器代表一个超紧凑型完整系统，具有自动锁定的快速释放紧固件，可实现简单且安全的连接。

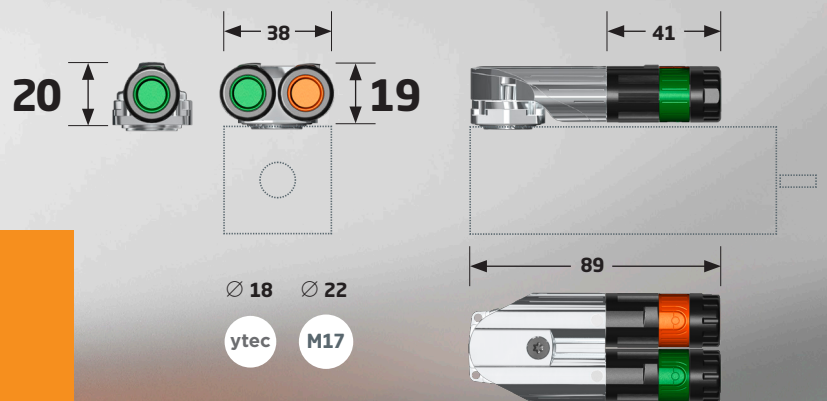
机械编码外壳与色码相结合，使任何信号和电源插头不可能发生混淆。

自动
ytec、itec 紧固件即使在最小的空间内也可使用



扁平 - 窄 - 短

ytec 和 itec 系统连接器定义新的连接器尺寸。所有三个维度的小型化尺寸可确保系统即使与最小的电机也兼容。



小型化完整系统

扁平、窄、短

装配空间充足

安装简单快捷

自锁系统

清晰安全的编码外壳

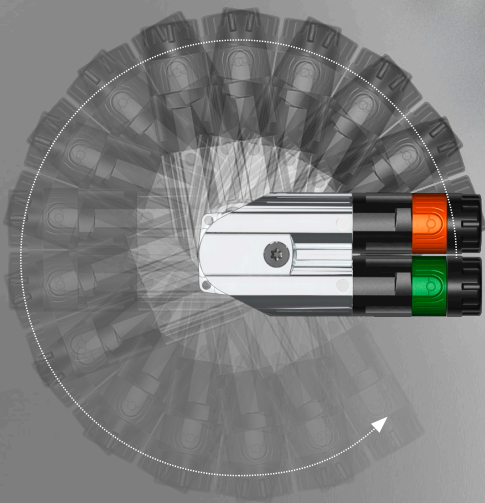
可 4 x 90° 角安装, 可旋转 300°

Maximum Accessibility, Minimal Intrusion

Due to a perfect cover partition and enough space for easy assembly, fitting contacts has never been easier! The **ytec** system requires only one mounting hole and is available in two different flange sizes 25 and 28.

itec connectors, the ytec Single Solution

itec connectors are available in all **ytec** pin layouts and is compatible with all mating **ytec** plugs.



Plenty of Flexibility, Little Space Requirement

The **ytec** connector system can be mounted in 4 different angles (0°, 90°, 180° and 270°). Additionally, after installation, the system is infinitely rotatable by 300°.

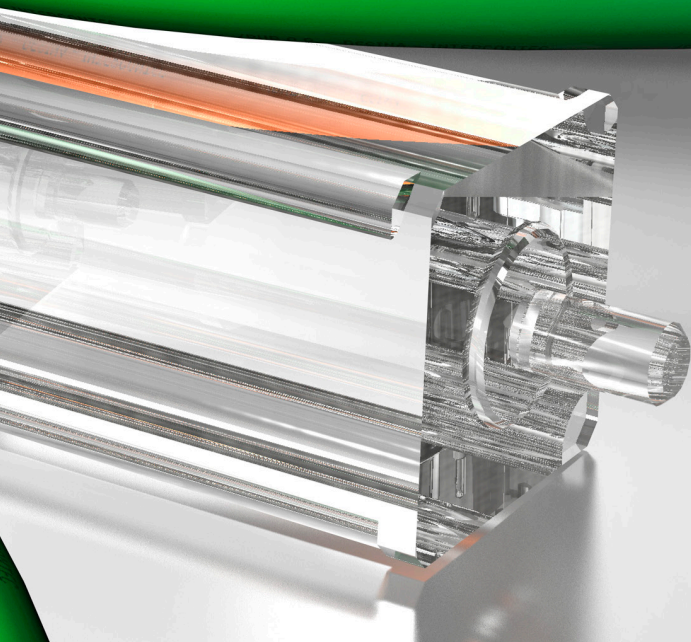
ytec · itec
SELF LOCKING SYSTEM

Easier isn't Possible.

ytec, itec connectors represent an ultra compact complete system with an automatically locking quick-release fastener for easy and safe connections.

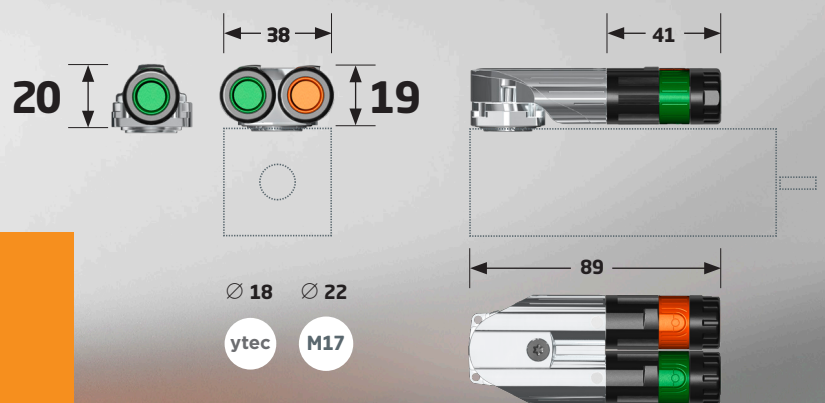
The mechanically coded housing in conjunction with colour coding makes any confusion of signal and power plug impossible.

Automatic
ytec, itec fastener
even in the
smallest space



Flat - Narrow - Short

ytec and itec system connectors define a new connector dimension. Miniaturized size in all three dimensions ensures that the system is compatible even with the smallest of motors.



- A complete system miniaturized
- Flat, narrow, short
- Plenty of assembly space
- Easy and quick mounting
- Self locking system
- Clearly and safely coded housing
- Mountable in 4 x 90° angles, rotatable by 300°

DIN EN ISO 9001:2015

质量

根据 DIN EN ISO 9001:2015 质量管理体系, 为全球用户提供符合标准的质量。

根据这些国家和国际标准进行的资格认证正在 Niederwinkling 的内部测试实验室进行。

在许多方面都超过国家和国际标准的严格且特殊的 INTERCONTEC 要求基于特定公司标准而设定, 并通过 INTERCONTEC 实验室中的真实测试进行记录和验证。连接器组件的高自动化水平以及生产过程中的实时控制提供了非常高的工艺可靠性和出色质量。

所有经过压接机加工的端子都经过拔出力和压接质量测试。定期进行显微切片测试和插接次数测试。

在生产过程中, 在 IP 防护、插针配置、连续性和插接测试方面集成了实时控制功能, 可确保我们的电缆组件具有出色的性能。

产品认证

请在以下位置查找所有相关产品认证:

<https://www.te.com/global-en/products/brands/intercontec.html>

Quality

The quality management system according to DIN EN ISO 9001:2015 provides standard conforming quality for users worldwide.

Qualifications for certifications according to these national and international standards are being performed at the in-house test laboratory in Niederwinkling.

Very high, special INTERCONTEC demands, which surpass national and international standards in many regards are set in specific company standards, documented and verified with real life tests in the INTERCONTEC laboratory. The high automation level of the connector assembly with real-time control during production provides highest process liability and optimum quality.

All contacts that are processed with a crimp machine are extraction force and crimp quality tested. In regular intervals microscopic micro-section tests and mating cycle tests are conducted.

Integrated real-time controls during production in terms of IP protection, pin configuration, continuity and mating tests guarantee optimum performance of our cable assemblies.

Product Certifications

Please find all relevant product certificates under:

<https://www.te.com/global-en/products/brands/intercontec.html>

EN 60529

IP 66/67

IP 防护等级符合 EN 60529

除非另有特别说明, 否则所有 Intercontec 连接器均具有 IP 66/67 防护等级。根据设计规格, 连接器必须能够抵御限制性能的环境影响(灰尘、湿度、清洁溶剂等)。

(参见第42/43 页附录中的表格)

IP Protection Rating according to EN 60529

All INTERCONTEC connectors are IP 66/67 rated unless specifically stated otherwise. According to the design specification connectors have to be protected against environmental influences that limit the performance (dust, humidity, cleaning solvents, etc.).

(see tables in the appendix, p. 42/43)

DIN EN ISO 60512

屏蔽和电磁兼容性 (EMC)

Intercontec 屏蔽层涂抹在可同轴 360° 旋转的外壳上, 能够提供出色的电磁兼容性。根据 EMC 法规, 设备必须满足以下标准:

1. 电磁干扰必须限制在可完成预期操作的范围内。
2. 设备必须提供适当的抗电磁干扰电阻, 以确保能够完成预期操作。

载流量

有关载流量的所有规格均在 INTERCONTEC 实验室中根据 DIN EN 60512 确定。在此过程中, 将创建一个载流量图表 (降额曲线), 其中显示了同时流经所有端子的最大连续电流。

温度上限由端子和绝缘材料的热特性确定。环境温度与工作电流引起的温度上升值之和不得超过连接器的温度限值。

载流量不是一个恒定值, 而是随着环境温度的升高而降低。

Shielding and Electromagnetic Compatibility (EMC)

The INTERCONTEC shielding rests on the housing coaxially 360° which provides optimum electromagnetic compatibility. According to legal EMC regulations devices must fulfill the following standards:

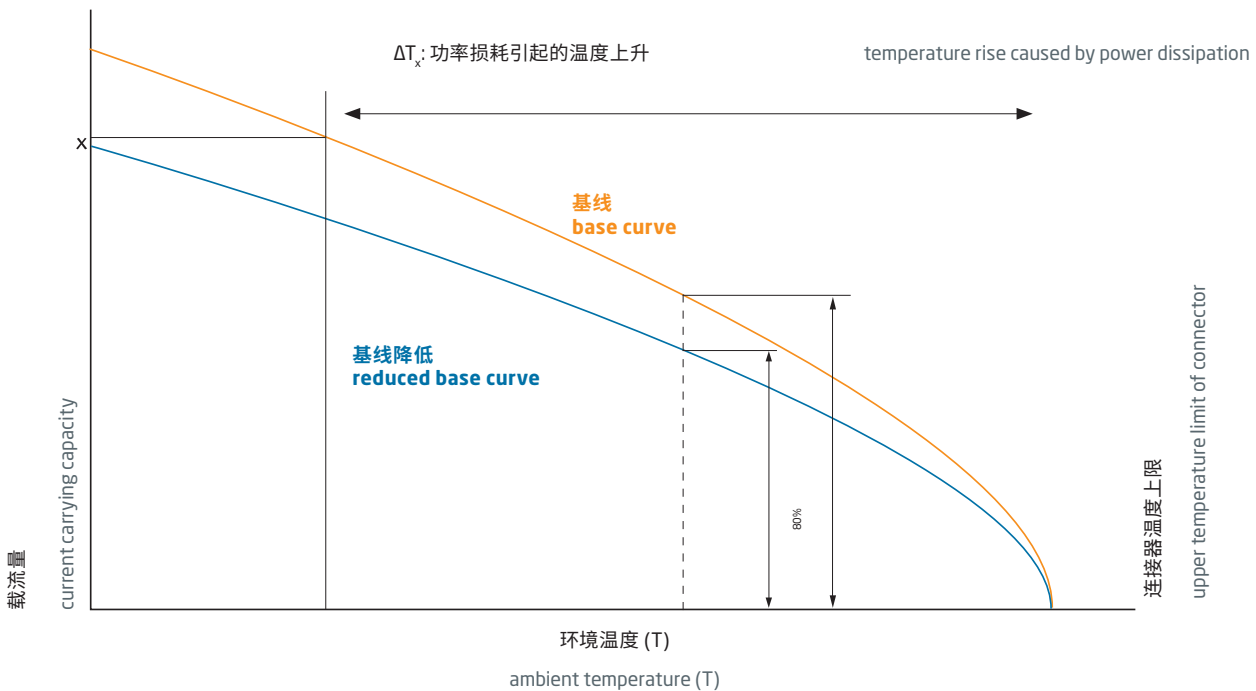
1. Electromagnetic interference must be limited to the degree that the intended operation is possible.
2. Devices must provide an appropriate resistance against electromagnetic interference to ensure the intended operation is possible.

Current Carrying Capacity

All specifications regarding electric current carrying capacity were determined in the INTERCONTEC laboratory according to DIN EN 60512. In this process a current carrying capacity diagram (derating curve) is created, which shows the maximum continuous current flowing through all contacts simultaneously.

The upper temperature limit is defined by the thermal characteristics of contact and insulation material. The sum of ambient temperature and the temperature rise caused by the operating current must not exceed the temperature limit of the connector.

The current carrying capacity is not a constant value, but decreases with rising ambient temperature.



材料		
外壳	黄铜、锌压铸； 镀镍和涂塑	根据应用的不同，金属外壳采用黄铜或锌压铸。在大多数情况下，锌压铸用于大批量生产。黄铜主要用于圆形部件。
连接螺母	塑料，30 % Gf	玻璃钢，可承受高机械应力。
绝缘塑芯	PA/PBT、UL 94/V0	对于连接器的绝缘塑芯，主要使用 PBT 和高质量 PA 变体，特别适用于高应力技术压铸件。这种塑料具有非常好的化学、电气和机械性能。
端子	镀金黄铜	端子特性主要由所用材料决定。 其中特别重要的是： ▶ 稳定性和灵活性特性 ▶ 最高工作温度 ▶ 导电性 ▶ 成形性
密封件	FPM	必须使用特殊密封件来满足耐油、耐油脂、耐溶剂、耐酸、耐碱和耐化学物以及极端温度应力的工业要求。在 Intercontec，这种标准材料是氟橡胶。
	EPDM	对于需要耐候、抗臭氧、抗紫外线和耐 -50°C 低温的特殊户外应用，我们使用三元乙丙橡胶 (EPDM)。
夹圈	塑料， 镀镍黄铜	玻璃钢，可承受高机械应力。

Materials		
Housing	brass, zinc diecast; nickel-plated and plastic-coated	Depending on the application brass or zinc diecast is used for the metal housing. In most cases zinc diecast is used for larger quantities. Brass is primarily used for round parts.
Connecting Nut	plastic,	Fiber-glass reinforced for high mechanical stress.
Insulation Insert	PA/PBT, UL 94/V0	For insulation inserts of connectors mostly PBT and high-quality PA-variants are used that are especially suitable for highly stressed technical diecast parts. The plastic has very good chemical, electrical and mechanical properties.
Contacts	brass gold plated	Contact characteristics are mainly determined by the materials used. Especially important among others are: ▶ stability and flexibility characteristics ▶ max. operating temperature ▶ electrical conductivity ▶ formability
Seals	FPM	Special seals have to be used to cope with industrial requirements for resistance against oil, grease, solvents and acids, bases and chemicals as well as extreme temperature stress. At INTERCONTEC the standard material is fluor rubber.
	EPDM	For special outdoor applications, which require weather, ozone, UV and temperature resistance down to -50° C we use ethylene propylen dien rubber (EPDM).
Clamp Ring	plastic, brass nickel-plated	Fiber-glass reinforced for high mechanical stress.

值符合 VDE 0110/EN 61984, 部件 6.19.2.2	
污染度	3
过压类别	III
最大操作高度	2000m





可根据请求提供单独的 VDE 认证和认可。

Values according to VDE 0110/EN 61984, part 6.19.2.2	
pollution degree	3
over voltage category	III
max. height for operation	2000m

Individual VDE certifications and accreditations available on request.

一般技术数据	
端子安装方式 压接压接版本	
温度范围 -20° C 至 130° C /从 -50° C 起可选	
防护类型 IP 66/67 (连接时)	
屏蔽 EMC 屏蔽外壳	
接地至壳体连接 符合 VDE 0627	
插接次数 最少500	
夹紧范围 Ø 6.0 - Ø 12.0 mm	
锁定类型 自锁系统快锁系统	

General Technical Data	
Contact Terminations crimp version	
Temperature Range -20° C to 130° C / optional from -50° C	
Protection Type IP 66/67 when connected	
Shielding EMC shielded housing	
Earth-to-Housing Connection according to VDE 0627	
Mating Cycles min. 500	
Clamping Range Ø 6.0 - Ø 12.0 mm	
Locking Types self locking system quick locking system	

电气数据		Electrical Data						
	最大连接截面处的额定电流 rated current at max. connection cross section	额定电压 rated voltage		额定绝缘电压 rated insulation voltage	插针数 number of pins	端子 Ø contact Ø	最大横截面 max. cross section	
		[A] nach VDE	[A] nach UL (USR)	[V] nach VDE	[V] nach UL (USR)	[kV]	[mm]	[mm ²]
12 	5	5	63	63	1.5	12	1.0	0.75
15 	14 5	14 3.6	600 63	600 63	1.5	3+12	1.0	1.5/ 0.75
9 	14 3.6	14 3.6	630 63	750 AC/ 890 DC 63	6/1.5	3+PE+5	1.0	1.5/ 0.75
5 	M12 接口 M12 interface							

ytec · itec
SELF LOCKING SYSTEM



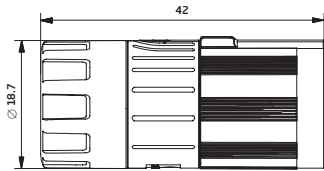
E S T ■ ■ ■ ■ ■ ■ ■ ■ ■ ■ 0 0 0 1 ■ ■ ■ ■

插头

带有 ytec, itec 快速锁定紧固件, 用于自动锁定

Plug

with ytec, itec quick lock fastener for automatic locking



ytec · itec
SELF LOCKING SYSTEM



E D F ■ ■ ■ ■ ■ ■ ■ ■ ■ ■ 0 0 0 0 0 2 ■ ■ ■ ■

A 镀锌

nickel-plated

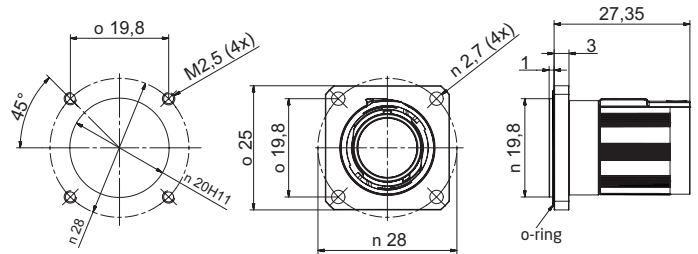
穿板式连接器

带有 ytec, itec 快速锁定紧固件, 用于自动锁定, 法兰安装 25 x 25 mm, 轴向 O 型环密封

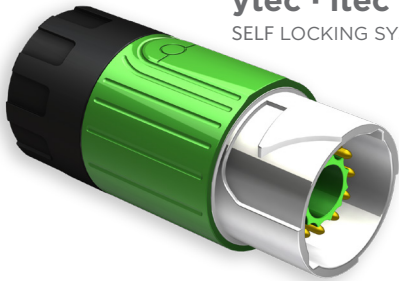
Bulkhead Connector

with ytec, itec quick lock fastener for automatic locking, flange mount 25 x 25 mm, axiale o-ring seal

Mounting hole



ytec · itec
SELF LOCKING SYSTEM



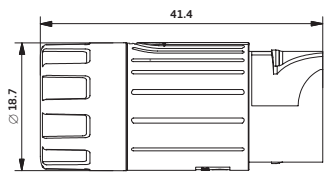
E K U ■ ■ ■ ■ ■ ■ ■ ■ ■ ■ 0 0 0 1 ■ ■ ■ ■

延伸产品

适用于 ytec, itec 快速锁定紧固件

Extension

for ytec, itec quick lock fastener



ytec · itec
SELF LOCKING SYSTEM



E K U ■ ■ ■ ■ ■ ■ ■ ■ ■ ■ 0 1 0 3 ■ ■ ■ ■

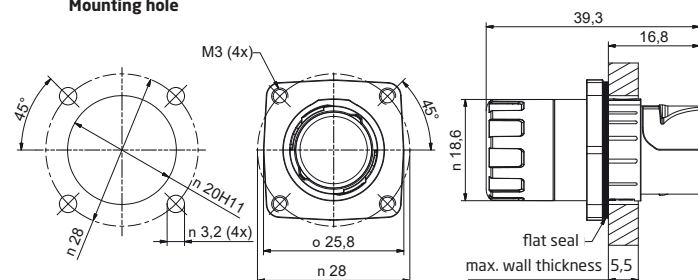
延伸产品

带有 ytec, itec 快速锁定紧固件, 通过法兰 25 x 25 mm 实现前端或后部安装, 轴向 O 型环密封, 最大壁厚 5.5 mm。

Extension

with ytec, itec quick lock fastener, front- or rear mount with flange 25 x 25 mm, axial o-ring seal, wall thickness 5.5 mm max.

Mounting hole



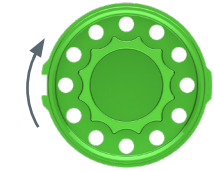
绝缘塑芯和端子

Insulation Inserts and Contacts

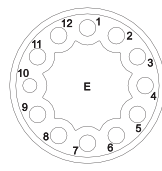


12 针公端
(12 x Ø 1 mm)

12-pin male



插接视图

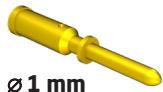


mating view



公端子 Ø 1 mm
不是产品内容的一部分

male contact Ø 1 mm
Not part of product contents



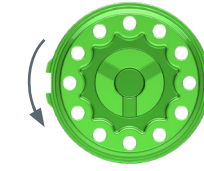
Ø 1 mm
压接范围 0.05-0.75mm²
crimping range 0.05-0.75mm²

61.232.11

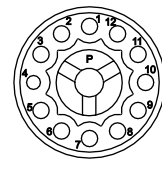


12 针母端
(12 x Ø 1 mm)

12-pin female



插接视图

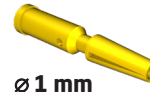


mating view



母端子 Ø 1 mm
不是产品内容的一部分

female contact Ø 1 mm
Not part of product contents



Ø 1 mm
开槽, 压接范围 0.05 - 0.75 mm²
slotted, crimping range 0.05 - 0.75 mm²

60.252.11

货号 Art. No.

带金属夹圈的电缆固定夹

Cable Clamps with plastic clamp ring

薄片夹

Lamella Clamp



电缆夹紧范围 4.5 - 6.5 mm

cable clamping range 4.5 - 6.5 mm



电缆夹紧范围 6.5 - 8.5 mm

cable clamping range 6.5 - 8.5 mm



电缆夹紧范围 8.5 - 10.5 mm

cable clamping range 8.5 - 10.5 mm

集成式密封、防扭曲和同轴屏蔽连接。

Integrated seal, anti-twist protection and coaxial shield connection.



带金属夹圈的电缆固定夹

Cable Clamps with metal clamp ring

薄片夹

Lamella Clamp



电缆夹紧范围 4.5 - 6.5 mm

cable clamping range 4.5 - 6.5 mm



电缆夹紧范围 6.5 - 8.5 mm

cable clamping range 6.5 - 8.5 mm

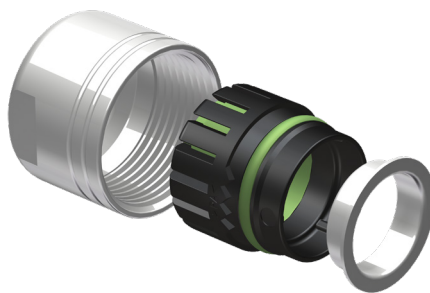


电缆夹紧范围 8.5 - 10.5 mm

cable clamping range 8.5 - 10.5 mm

集成式密封、防扭曲和同轴屏蔽连接。

Integrated seal, anti-twist protection and coaxial shield connection.



XL 夹具

XL Clamp

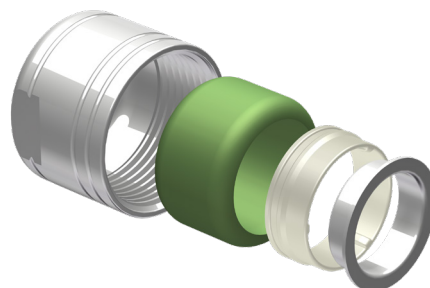


电缆夹紧范围 10.5 - 12 mm

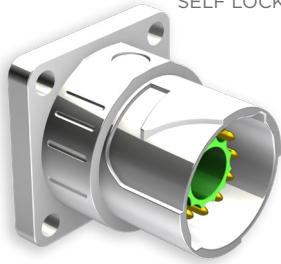
cable clamping range 10.5 - 12 mm

集成式密封、防扭曲和同轴屏蔽连接。

Integrated seal, anti-twist protection and coaxial shield connection.



ytec · itec
SELF LOCKING SYSTEM



A 镀镍 nickel-plated

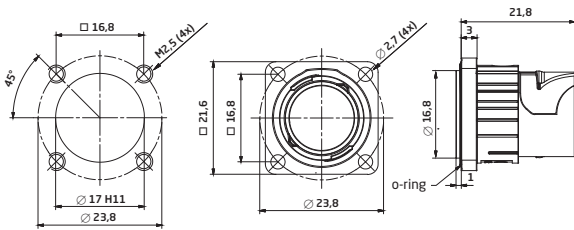
母端子

适用于 ytec, itec 快速锁定紧固件, 法兰安装 21 x 21 mm, 轴向密封

Receptacle

for ytec, itec quick lock fastener, flange mount 21 x 21 mm, axial seal

Mounting hole



ytec · itec
SELF LOCKING SYSTEM



A 镀镍 nickel-plated

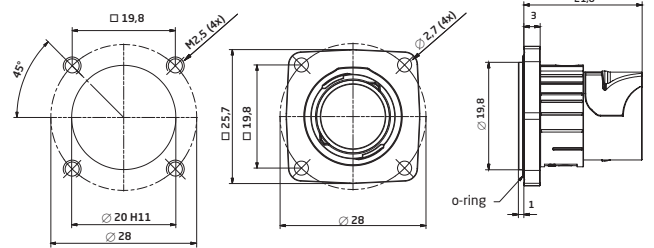
母端子

适用于 ytec, itec 快速锁定紧固件, 法兰安装 25 x 25 mm, 轴向密封

Receptacle

for ytec, itec quick lock fastener, flange mount 25 x 25 mm, axial seal

Mounting hole



ytec · itec
SELF LOCKING SYSTEM



A 镀镍 nickel-plated

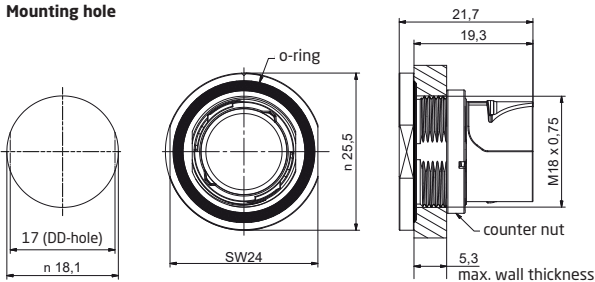
插座

适用于 ytec, itec 快速锁定紧固件, 带有锁紧螺母的后部安装, 轴向密封, 最大壁厚 5.5mm。

Receptacle

for ytec, itec quick lock fastener, rear mount with lock nut, axial seal, wallthickness 5.5mm max.

Mounting hole



ytec · itec
SELF LOCKING SYSTEM



A 镀镍 nickel-plated

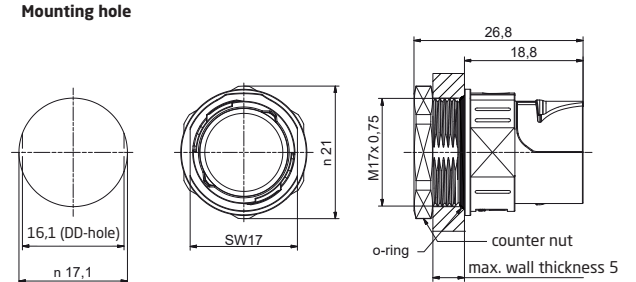
插座

适用于 ytec, itec 快速锁定紧固件, 带有锁紧螺母的螺纹侧装式 M17 x 0.75, 轴向密封, 最大壁厚 5 mm。

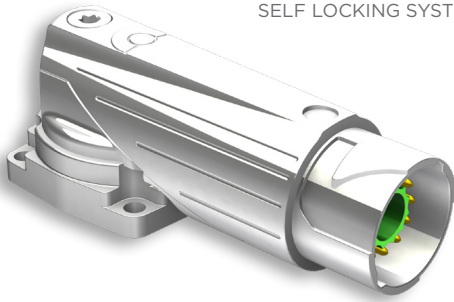
Receptacle

for ytec, itec quick lock fastener, mounting side threaded M17 x 0.75 with locknut, axial seal, wallthickness 5 mm max.

Mounting hole



ytec · itec
SELF LOCKING SYSTEM



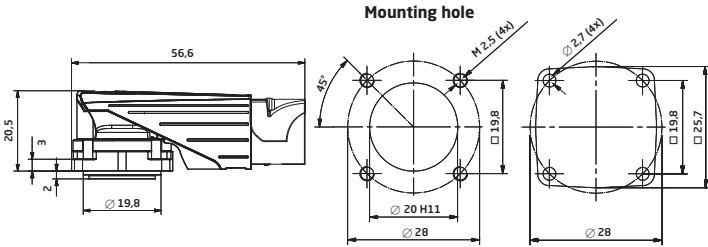
A 镀镍 nickel-plated

可旋转弯式插座, itec

适用于 ytec, itec 快速锁定紧固件, 法兰安装 25 x 25 mm, 轴向密封

Receptacle Angled Rotatable, itec

for ytec, itec quick lock fastener, flange mount 25 x 25 mm, axial seal



ytec · itec
SELF LOCKING SYSTEM



类似图示
illustration similar



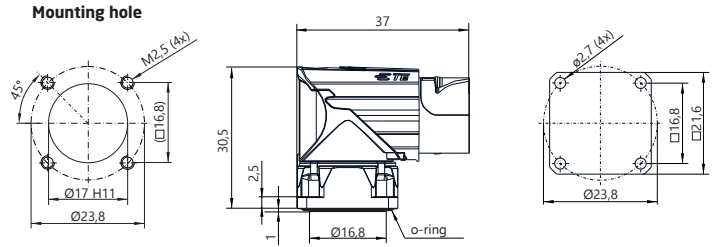
A 镀镍 nickel-plated

短型弯式可旋转插座, itec

适用于 ytec, itec 快速锁定紧固件, 法兰安装 21 x 21 mm, 轴向密封

Receptacle Angled Rotatable, short, itec

for ytec, itec quick lock fastener, flange mount 21 x 21 mm, axial seal



ytec · itec
SELF LOCKING SYSTEM



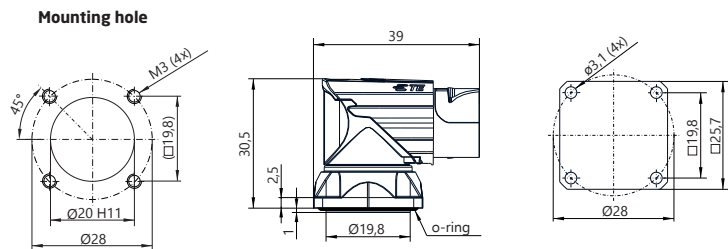
A 镀镍 nickel-plated

短型弯式可旋转插座, itec

适用于 ytec, itec 快速锁定紧固件, 法兰安装 25 x 25 mm, 轴向密封

Receptacle Angled Rotatable, short, itec

for ytec, itec quick lock fastener, flange mount 25 x 25 mm, axial seal



ytec · itec
SELF LOCKING SYSTEM



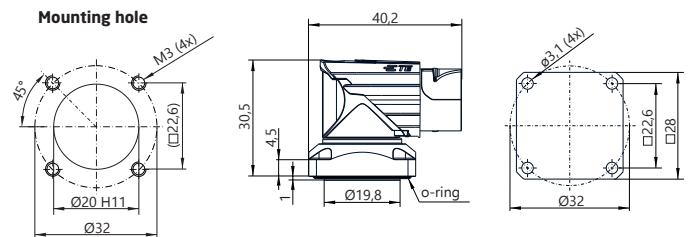
A 镀镍 nickel-plated

短型弯式可旋转插座, itec

适用于 ytec, itec 快速锁定紧固件, 法兰安装 28 x 28 mm, 轴向密封

Receptacle Angled Rotatable, short, itec

for ytec, itec quick lock fastener, flange mount 28 x 28 mm, axial seal



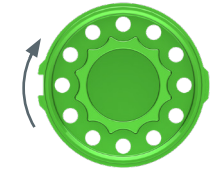
绝缘塑芯和端子

Insulation Inserts and Contacts

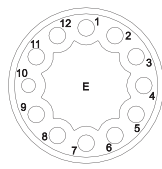


12 针公端
(12 x Ø 1 mm)

12-pin male



插接视图



mating view



公端子 Ø 1 mm
不是产品内容的一部分

male contact Ø 1 mm
Not part of product contents



Ø 1 mm

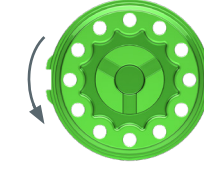
压接范围 0.05-0.75mm²
crimping range 0.05-0.75mm²

货号 Art. No. **61.232.11**

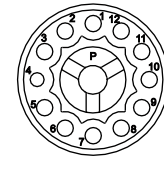


12 针母端
(12 x Ø 1 mm)

12-pin female



插接视图

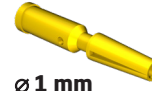


mating view



母端子 Ø 1 mm
不是产品内容的一部分

female contact Ø 1 mm
Not part of product contents



Ø 1 mm

开槽, 压接范围 0.05 - 0.75 mm²
slotted, crimping range 0.05 - 0.75 mm²

60.252.11



ytec · itec
SELF LOCKING SYSTEM

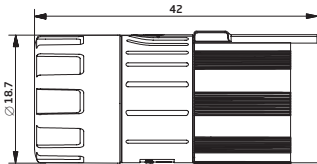
E S T ■ ■ ■ ■ ■ ■ ■ ■ ■ ■ 0 5 0 0 ■ ■ ■ ■ ■ ■ ■ ■ ■ ■

插头

带有 ytec, itec 快速锁定紧固件, 用于自动锁定和绝缘塑芯 9 针

Plug

with ytec, itec quick lock fastener for automatic locking and insulation insert 9-pin



ytec · itec
SELF LOCKING SYSTEM

E D F ■ ■ ■ ■ ■ ■ ■ ■ ■ ■ 0 0 0 5 0 1 ■ ■ ■ ■ ■ ■ ■ ■ ■ ■

A 镀镍

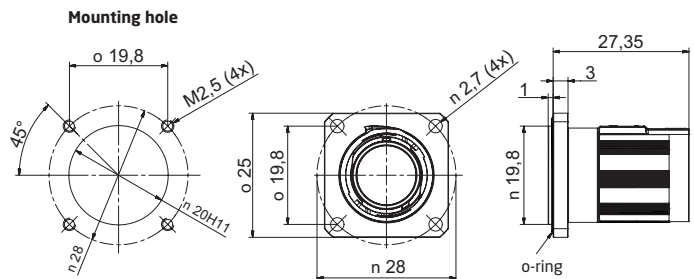
nickel-plated

穿板式连接器

带有 ytec, itec 快速锁定紧固件, 用于自动锁定和绝缘塑芯 9 针, 法兰安装 25 x 25 mm, 轴向 O 型环密封

Bulkhead Connector

with ytec, itec quick lock fastener for automatic locking and insulation insert 9-pin, flange mount 25 x 25 mm, axiale o-ring seal



ytec · itec
SELF LOCKING SYSTEM



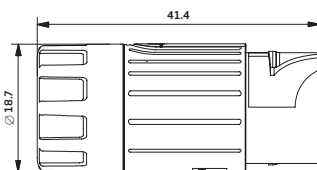
E K U ■ ■ ■ ■ ■ ■ ■ ■ ■ ■ 0 5 0 0 ■ ■ ■ ■ ■ ■ ■ ■ ■ ■

延伸产品

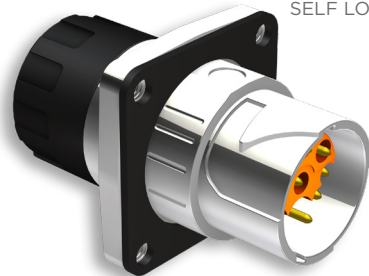
适用于 ytec, itec 快速锁定紧固件和绝缘塑芯 9 针

Extension

for ytec, itec quick lock fastener and insulation insert 9-pin



ytec · itec
SELF LOCKING SYSTEM



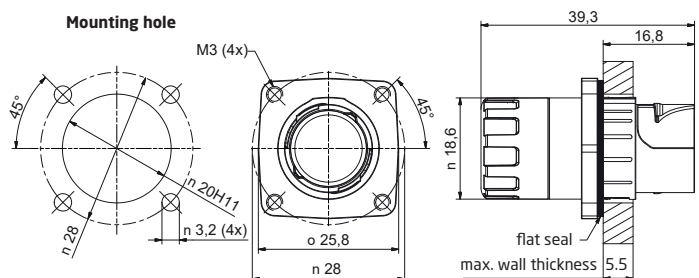
E K U ■ ■ ■ ■ ■ ■ ■ ■ ■ ■ 0 6 0 2 ■ ■ ■ ■ ■ ■ ■ ■ ■ ■

延伸产品

带有 ytec, itec 快速锁定紧固件和绝缘塑芯 9 针, 通过法兰 25 x 25 mm 实现前端或后部安装, 轴向 O 型环密封, 最大壁厚 5.5 mm。

Extension

with ytec, itec quick lock fastener and insulation insert 9-pin, front- or rear mount with flange 25 x 25 mm, axial o-ring seal, wall thickness 5.5 mm max.

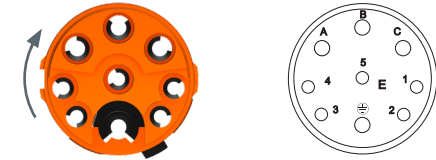


绝缘塑芯和端子

Insulation Inserts and Contacts



9 针公端 9-pin male
9 x Ø 1 mm
[4 x bis 1.5 mm² (3+PE) + 5 x bis 0.75 mm²]

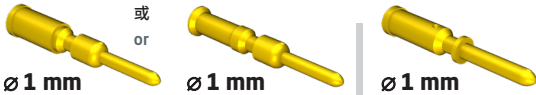


插接视图

mating view



公端子 Ø 1 mm male contact Ø 1 mm
 不是产品内容的一部分 Not part of product contents



Ø 1 mm
 压接范围
 0.5 - 1.5 mm²
 crimping range
 0.5 - 1.5 mm²

Ø 1 mm
 压接范围
 0.05 - 0.75 mm²
 crimping range
 0.05 - 0.75 mm²

Ø 1 mm
 压接范围
 0.05 - 0.75 mm²
 crimping range
 0.05 - 0.75 mm²

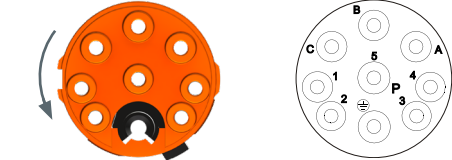
货号 Art. No. **61.231.11**

61.239.11

61.232.11



9 针公端 9-pin male
9 x Ø 1 mm
[4 x bis 1.5 mm² (3+PE) + 5 x bis 0.75 mm²]

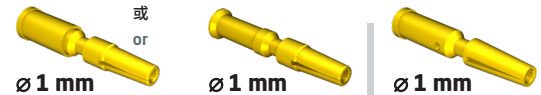


插接视图

mating view



母端子 Ø 1 mm female contact Ø 1 mm
 不是产品内容的一部分 Not part of product contents



Ø 1 mm
 开槽, 压接范围
 0.5 - 1.5 mm²
 slotted, crimping range
 0.5 - 1.5 mm²

Ø 1 mm
 开槽, 压接范围
 0.05 - 0.75 mm²
 slotted, crimping range
 0.05 - 0.75 mm²

Ø 1 mm
 开槽, 压接范围
 0.05 - 0.75 mm²
 slotted, crimping range
 0.05 - 0.75 mm²

60.251.11

60.265.11

60.252.11

带塑料夹圈的电缆固定夹

Cable Clamps with plastic clamp ring

薄片夹

Lamella Clamp



电缆夹紧范围 4.5 - 6.5 mm

cable clamping range 4.5 - 6.5 mm



电缆夹紧范围 6.5 - 8.5 mm

cable clamping range 6.5 - 8.5 mm



电缆夹紧范围 8.5 - 10.5 mm

cable clamping range 8.5 - 10.5 mm

集成式密封、防扭曲和同轴屏蔽连接。

Integrated seal, anti-twist protection and coaxial shield connection.



带金属夹圈的电缆固定夹

Cable Clamps with metal clamp ring

薄片夹

Lamella Clamp



电缆夹紧范围 4.5 - 6.5 mm

cable clamping range 4.5 - 6.5 mm



电缆夹紧范围 6.5 - 8.5 mm

cable clamping range 6.5 - 8.5 mm



电缆夹紧范围 8.5 - 10.5 mm

cable clamping range 8.5 - 10.5 mm

集成式密封、防扭曲和同轴屏蔽连接。

Integrated seal, anti-twist protection and coaxial shield connection.

XL 夹具

XL Clamp

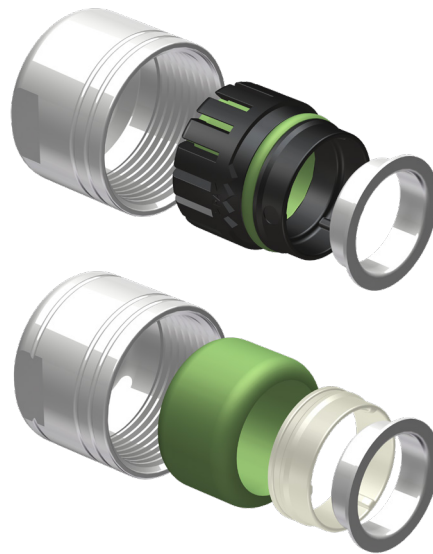


电缆夹紧范围 10.5 - 12 mm

cable clamping range 10.5 - 12 mm

集成式密封、防扭曲和同轴屏蔽连接。

Integrated seal, anti-twist protection and coaxial shield connection.



插头、穿板式连接器、延伸产品

Plug, Bulkhead Conn., Extension

ytec · itec SELF LOCKING SYSTEM



插头

带有 ytec, itec 快速锁定紧固件, 用于自动锁定和绝缘塑芯 15 针

Plug

with ytec, itec quick lock fastener for automatic locking and insulation insert 15-pin

ytec · itec SELF LOCKING SYSTEM



A 镀镍

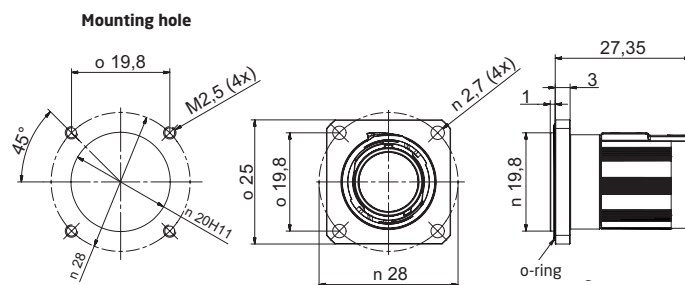
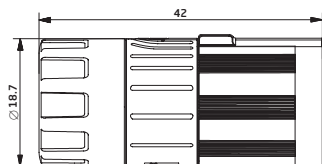
nickel-plated

穿板式连接器

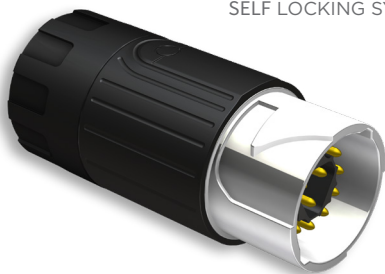
带有 ytec, itec 快速锁定紧固件, 用于自动锁定和绝缘塑芯 15 针, 法兰安装 25 x 25 mm, 轴向 O 型环密封

Bulkhead Connector

with ytec, itec quick lock fastener for automatic locking and insulation insert 15-pin, flange mount 25 x 25 mm, axiale o-ring seal



ytec · itec SELF LOCKING SYSTEM



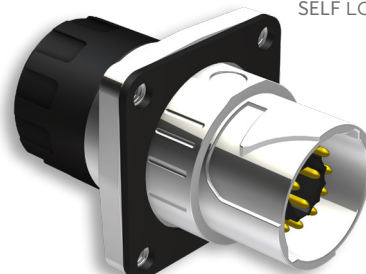
延伸产品

适用于 ytec, itec 快速锁定紧固件和绝缘塑芯 15 针

Extension

for ytec, itec quick lock fastener and insulation insert 15-pin

ytec · itec SELF LOCKING SYSTEM

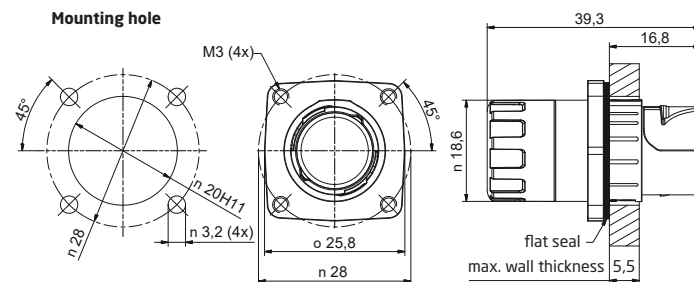
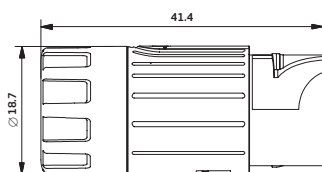


延伸产品

带有 ytec, itec 快速锁定紧固件和绝缘塑芯 15 针, 通过法兰 25 x 25 mm 实现前端或后部安装, 轴向 O 型环密封, 最大壁厚 5.5 mm。

Extension

with ytec, itec quick lock fastener and insulation insert 15-pin, front- or rear mount with flange 25 x 25 mm, axial o-ring seal, wall thickness 5.5 mm max.



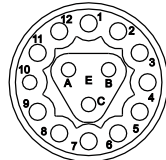
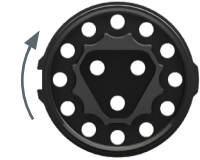
绝缘塑芯和端子

Insulation Inserts and Contacts



15 针公端
15 x Ø 1 mm
(12 x bis 0.75 mm² + 3 x bis 1.5 mm²)

15-pin male



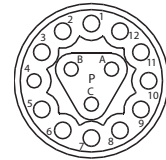
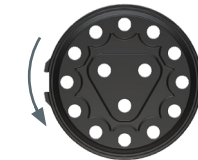
插接视图

mating view



15 针母端
15 x Ø 1 mm
(12 x bis 0.75 mm² + 3 x bis 1.5 mm²)

15-pin female



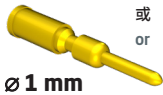
插接视图

mating view

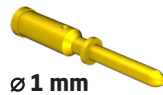
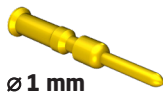


公端子 Ø 1 mm
不是产品内容的一部分

male contact Ø 1 mm
Not part of product contents



或



Ø 1 mm
压接范围
0.5 - 1.5 mm²
crimping range
0.5 - 1.5 mm²

Ø 1 mm
压接范围
0.05 - 0.75 mm²
crimping range
0.05 - 0.75 mm²

Ø 1 mm
压接范围
0.05 - 0.75 mm²
crimping range
0.05 - 0.75 mm²

61.231.11

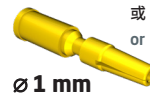
61.239.11

61.232.11

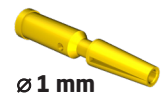
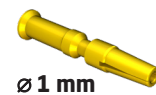


母端子 Ø 1 mm
不是产品内容的一部分

female contact Ø 1 mm
Not part of product contents



或



Ø 1 mm
开槽, 压接范围
0.5 - 1.5 mm²
slotted, crimping range
0.5 - 1.5 mm²

Ø 1 mm
开槽, 压接范围
0.05 - 0.75 mm²
slotted, crimping range
0.05 - 0.75 mm²

Ø 1 mm
开槽, 压接范围
0.05 - 0.75 mm²
slotted, crimping range
0.05 - 0.75 mm²

60.251.11

60.265.11

60.252.11

货号

Art. No.

带塑料夹圈的电缆固定夹

Cable Clamps with plastic clamp ring

薄片夹

Lamella Clamp



电缆夹紧范围 4.5 - 6.5 mm

cable clamping range 4.5 - 6.5 mm



电缆夹紧范围 6.5 - 8.5 mm

cable clamping range 6.5 - 8.5 mm



电缆夹紧范围 8.5 - 10.5 mm

cable clamping range 8.5 - 10.5 mm

集成式密封、防扭曲和同轴屏蔽连接。

Integrated seal, anti-twist protection and coaxial shield connection.



带金属夹圈的电缆固定夹

Cable Clamps with metal clamp ring

薄片夹

Lamella Clamp



电缆夹紧范围 4.5 - 6.5 mm

cable clamping range 4.5 - 6.5 mm



电缆夹紧范围 6.5 - 8.5 mm

cable clamping range 6.5 - 8.5 mm



电缆夹紧范围 8.5 - 10.5 mm

cable clamping range 8.5 - 10.5 mm

集成式密封、防扭曲和同轴屏蔽连接。

Integrated seal, anti-twist protection and coaxial shield connection.



XL 夹具

XL Clamp

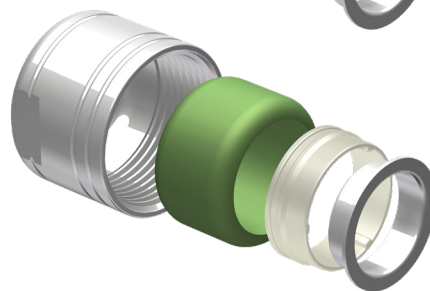


电缆夹紧范围 10.5 - 12 mm

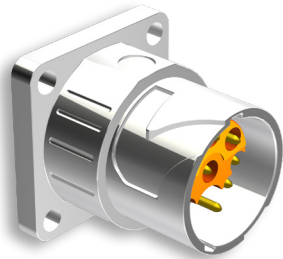
cable clamping range 10.5 - 12 mm

集成式密封、防扭曲和同轴屏蔽连接。

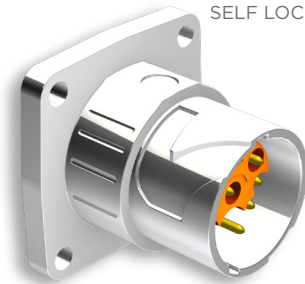
Integrated seal, anti-twist protection and coaxial shield connection.



ytec · itec
SELF LOCKING SYSTEM



ytec · itec
SELF LOCKING SYSTEM



E E G ■ ■ ■ ■ ■ ■ ■ ■ ■ ■ 00 0500 ■ ■ ■ ■ ■ ■ ■ ■ ■ ■

A 镀镍 nickel-plated

母端子
适用于 ytec, itec 快速锁定紧固件, 法兰安装 21 x 21 mm, 轴向密封, 用于 9 针绝缘塑芯

Receptacle
for ytec, itec quick lock fastener, flange mount 21 x 21 mm, axial seal, for insulation insert 9-pin

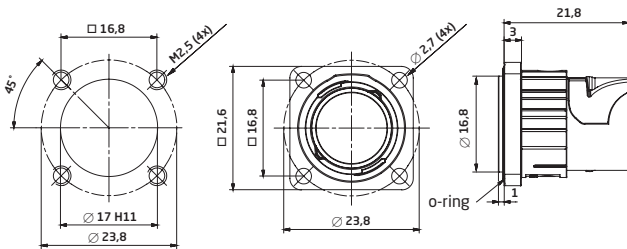
E E G ■ ■ ■ ■ ■ ■ ■ ■ ■ ■ 00 0501 ■ ■ ■ ■ ■ ■ ■ ■ ■ ■

A 镀镍 nickel-plated

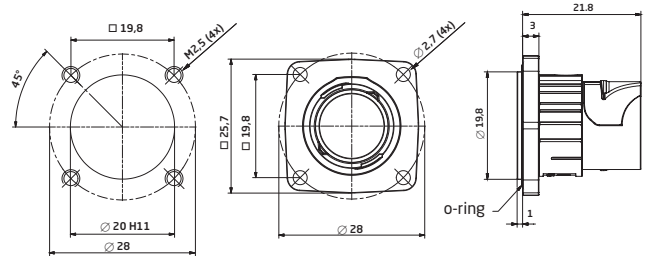
母端子
适用于 ytec, itec 快速锁定紧固件, 法兰安装 25 x 25 mm, 轴向密封, 用于 9 针绝缘塑芯

Receptacle
for ytec, itec quick lock fastener, flange mount 25 x 25 mm, axial seal, for insulation insert 9-pin

Mounting hole



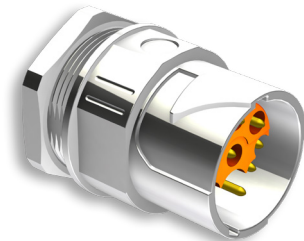
Mounting hole



ytec · itec
SELF LOCKING SYSTEM



ytec · itec
SELF LOCKING SYSTEM



E E G ■ ■ ■ ■ ■ ■ ■ ■ ■ ■ 00 0506 ■ ■ ■ ■ ■ ■ ■ ■ ■ ■

A 镀镍 nickel-plated

母端子
适用于 ytec, itec 快速锁定紧固件, 带有锁紧螺母的后部安装, 轴向密封, 最大壁厚 5.5 mm, 用于 9 针绝缘塑芯

Receptacle
for ytec, itec quick lock fastener, rear mount with lock nut, axial seal, wallthickness 5.5 mm max., for insulation insert 9-pin

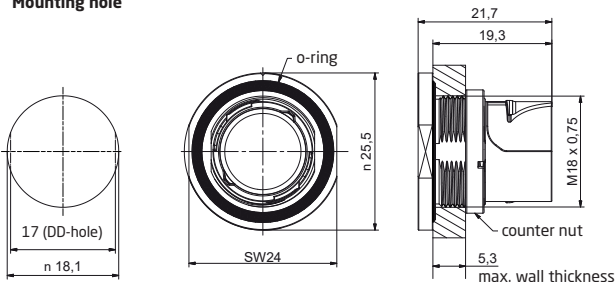
E E G ■ ■ ■ ■ ■ ■ ■ ■ ■ ■ 00 0508 ■ ■ ■ ■ ■ ■ ■ ■ ■ ■

A 镀镍 nickel-plated

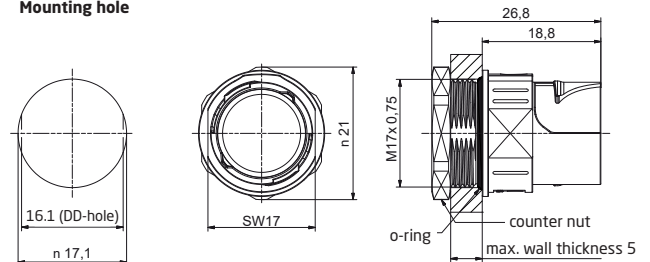
母端子
适用于 ytec, itec 快速锁定紧固件, 带有锁紧螺母的螺纹侧装式 M1.7 x 0.75, 轴向密封, 最大壁厚 5 mm, 用于 9 针绝缘塑芯

Receptacle
for ytec, itec quick lock fastener, mounting side threaded M1.7 x 0.75 with lock nut, axial seal, wallthickness 5 mm max., for insulation insert 9-pin

Mounting hole



Mounting hole

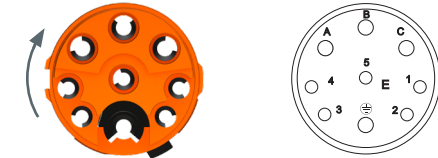


绝缘塑芯和端子

Insulation Inserts and Contacts



9 针公端 9-pin male
9 x Ø 1 mm
[4 x bis 1.5 mm² (3+PE) + 5 x bis 0.75 mm²]



插接视图

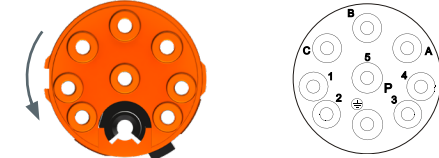
mating view



公端子 Ø 1 mm male contact Ø 1 mm
 不是产品内容的一部分 Not part of product contents



9 针母端 9-pin female
9 x Ø 1 mm
[4 x bis 1.5 mm² (3+PE) + 5 x bis 0.75 mm²]



插接视图

mating view

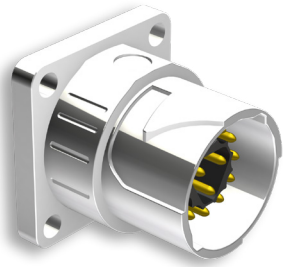


母端子 Ø 1 mm female contact Ø 1 mm
 不是产品内容的一部分 Not part of product contents



货号 Art. No.

ytec · itec
SELF LOCKING SYSTEM



A 镀镍 nickel-plated

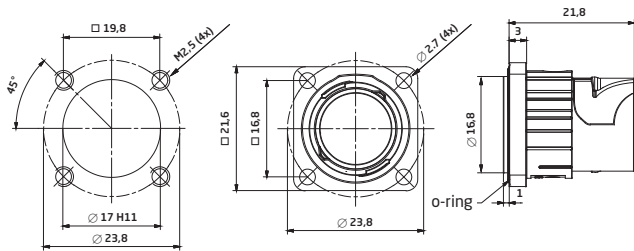
母端子

适用于 ytec, itec 快速锁定紧固件, 法兰安装 21 x 21 mm, 轴向密封, 用于 15 针绝缘塑芯

Receptacle

for ytec, itec quick lock fastener, flange mount 21 x 21 mm, axial seal, for insulation insert 15-pin

Mounting hole



ytec · itec
SELF LOCKING SYSTEM



A 镀镍 nickel-plated

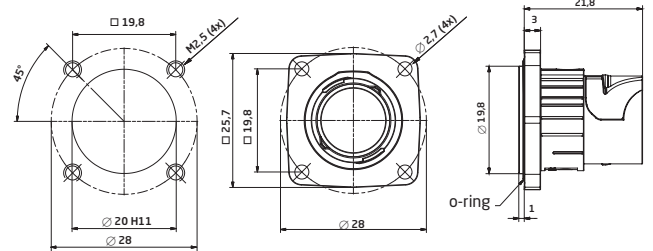
母端子

适用于 ytec, itec 快速锁定紧固件, 法兰安装 25 x 25 mm, 轴向密封, 用于 15 针绝缘塑芯

Receptacle

for ytec, itec quick lock fastener, flange mount 25 x 25 mm, axial seal, for insulation insert 15-pin

Mounting hole



ytec · itec
SELF LOCKING SYSTEM



A 镀镍 nickel-plated

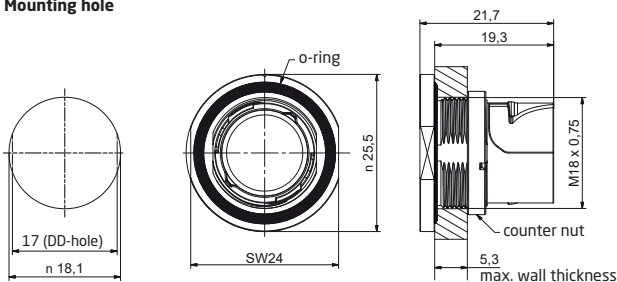
母端子

适用于 ytec, itec 快速锁定紧固件, 带有锁紧螺母的后部安装, 轴向密封, 用于 15 针绝缘塑芯

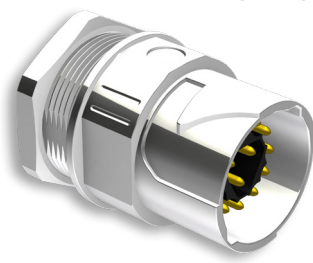
Receptacle

for ytec, itec quick lock fastener, rear mount with lock nut, axial seal, for insulation insert 15-pin

Mounting hole



ytec · itec
SELF LOCKING SYSTEM



A 镀镍 nickel-plated

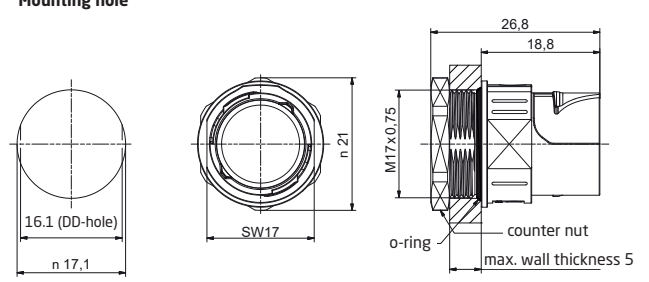
母端子

适用于 ytec, itec 快速锁定紧固件, 安装螺纹 M17x0.75, 带埋头螺母和轴向密封, 用于 15 针绝缘塑芯

Receptacle

for ytec, itec quick lock fastener, mounting thread M17x0.75 with counter nut and axial seal, for insulation insert 15-pin

Mounting hole

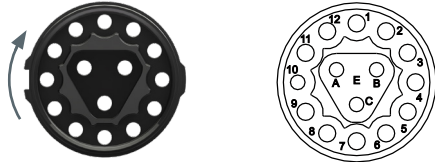


绝缘塑芯和端子

Insulation Inserts and Contacts



15 针公端 15-pin male
15 x Ø 1 mm
 (12 x bis 0.75 mm² + 3 x bis 1.5 mm²)



插接视图

mating view

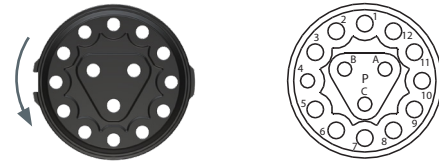


公端子 Ø 1 mm male contact Ø 1 mm
 不是产品内容的一部分 Not part of product contents

 或 or	 或 or	 或 or
Ø 1 mm 压接范围 0.5 - 1.5 mm ² crimping range 0.5 - 1.5 mm ²	Ø 1 mm 压接范围 0.05 - 0.75 mm ² crimping range 0.05 - 0.75 mm ²	Ø 1 mm 压接范围 0.05 - 0.75 mm ² crimping range 0.05 - 0.75 mm ²
61.231.11	61.239.11	61.232.11



15 针母端 15-pin female
15 x Ø 1 mm
 (12 x bis 0.75 mm² + 3 x bis 1.5 mm²)



插接视图

mating view



母端子 Ø 1 mm female contact Ø 1 mm
 不是产品内容的一部分 Not part of product contents

 或 or	 或 or	 或 or
Ø 1 mm 开槽, 压接范围 0.5 - 1.5 mm ² slotted, crimping range 0.5 - 1.5 mm ²	Ø 1 mm 开槽, 压接范围 0.05 - 0.75 mm ² slotted, crimping range 0.05 - 0.75 mm ²	Ø 1 mm 开槽, 压接范围 0.05 - 0.75 mm ² slotted, crimping range 0.05 - 0.75 mm ²
60.251.11	60.265.11	60.252.11

货号 Art. No.



ytec · itec
SELF LOCKING SYSTEM

9 针 9-pin
E E D 00 08 00

A 镀镍 nickel-plated

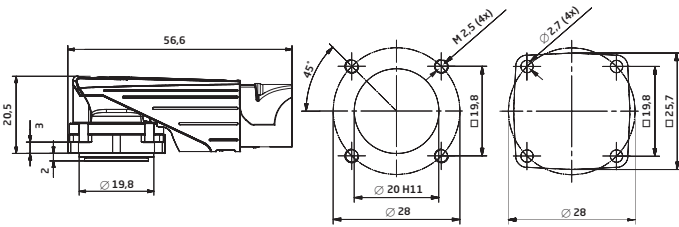
itec 可旋转弯式插座

适用于 ytec, itec 快速锁定紧固件, 法兰安装 25 x 25 mm, 轴向密封

itec Receptacle Angled, Rotatable

for ytec, itec quick lock fastener, flange mount 25 x 25 mm, axial seal

Mounting hole



ytec · itec
SELF LOCKING SYSTEM

9 针 9-pin
E E D 00 08 50

A 镀镍 nickel-plated

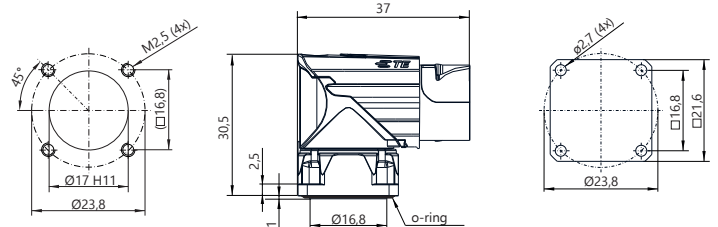
短型弯式可旋转插座、itec

适用于 ytec, itec 快速锁定紧固件, 法兰安装 21 x 21 mm, 轴向密封

Receptacle Angled Rotatable, short, itec

for ytec, itec quick lock fastener, flange mount 21 x 21 mm, axial seal

Mounting hole



ytec · itec
SELF LOCKING SYSTEM

9 针 9-pin
E E D 00 08 51

A 镀镍 nickel-plated

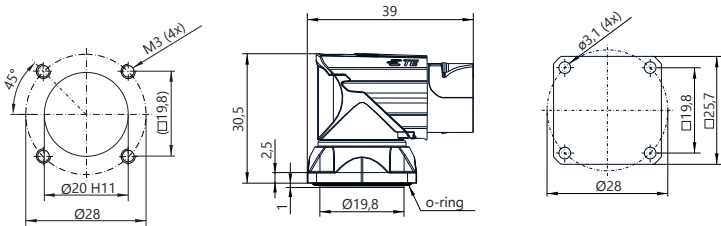
短型弯式可旋转插座、itec

适用于 ytec, itec 快速锁定紧固件, 法兰安装 25 x 25 mm, 轴向密封

Receptacle Angled Rotatable, short, itec

for ytec, itec quick lock fastener, flange mount 25 x 25 mm, axial seal

Mounting hole



ytec · itec
SELF LOCKING SYSTEM

9 针 9-pin
E E D 00 08 52

A 镀镍 nickel-plated

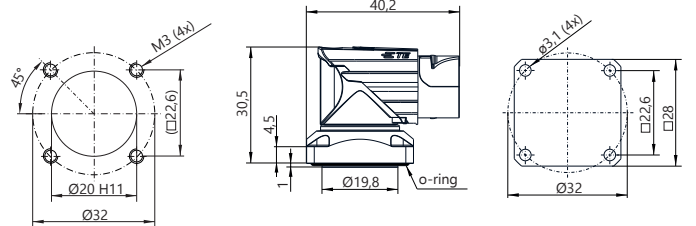
短型弯式可旋转插座、itec

适用于 ytec, itec 快速锁定紧固件, 法兰安装 28 x 28 mm, 轴向密封

Receptacle Angled Rotatable, short, itec

for ytec, itec quick lock fastener, flange mount 28 x 28 mm, axial seal

Mounting hole



绝缘塑芯和端子

Insulation Inserts and Contacts



9 针公端 9-pin male
9 x Ø 1 mm
[4 x bis 1.5 mm² (3+PE) + 5 x bis 0.75 mm²]



插接视图

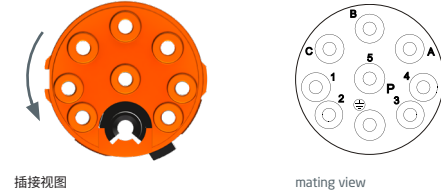
mating view



公端子 Ø 1 mm male contact Ø 1 mm
 不是产品内容的一部分 Not part of product contents



9 针母端 9-pin female
9 x Ø 1 mm
[4 x bis 1.5 mm² (3+PE) + 5 x bis 0.75 mm²]



插接视图

mating view



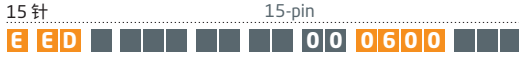
母端子 Ø 1 mm female contact Ø 1 mm
 不是产品内容的一部分 Not part of product contents



货号 Art. No.



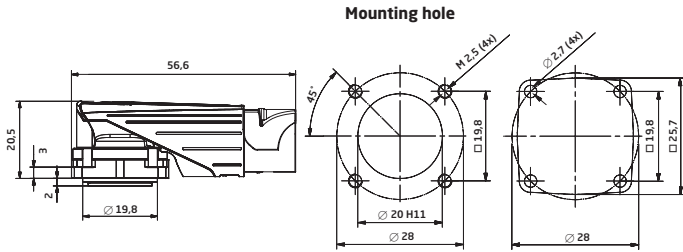
ytec · itec
SELF LOCKING SYSTEM



A 镀镍 nickel-plated

itec 可旋转弯式插座
适用于 ytec, itec 快速锁定紧固件, 法兰安装 25 x 25 mm, 轴向密封

itec Receptacle Angled, Rotatable
for ytec, itec quick lock fastener, flange mount 25 x 25 mm, axial seal



ytec · itec
SELF LOCKING SYSTEM

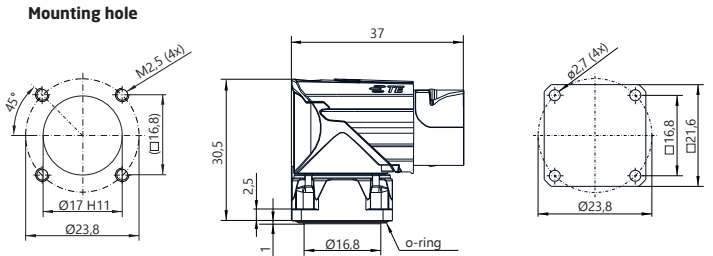
类似图示
illustration similar



A 镀镍 nickel-plated

短型弯式可旋转插座、itec
适用于 ytec, itec 快速锁定紧固件, 法兰安装 21 x 21 mm, 轴向密封

Receptacle Angled Rotatable, short, itec
for ytec, itec quick lock fastener, flange mount 21 x 21 mm, axial seal



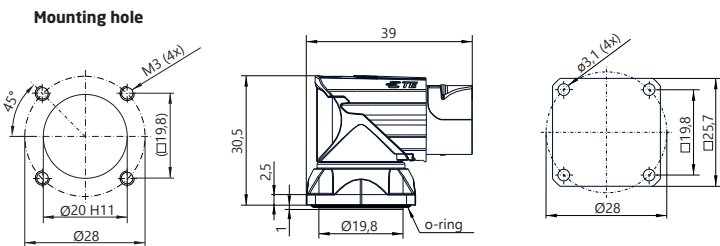
ytec · itec
SELF LOCKING SYSTEM



A 镀镍 nickel-plated

短型弯式可旋转插座、itec
适用于 ytec, itec 快速锁定紧固件, 法兰安装 25 x 25 mm, 轴向密封

Receptacle Angled Rotatable, short, itec
for ytec, itec quick lock fastener, flange mount 25 x 25 mm, axial seal



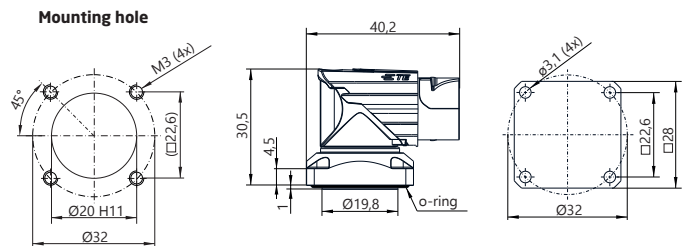
ytec · itec
SELF LOCKING SYSTEM



A 镀镍 nickel-plated

短型弯式可旋转插座、itec
适用于 ytec, itec 快速锁定紧固件, 法兰安装 28 x 28 mm, 轴向密封

Receptacle Angled Rotatable, short, itec
for ytec, itec quick lock fastener, flange mount 28 x 28 mm, axial seal

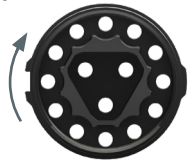


绝缘塑芯和端子

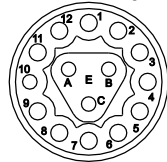
Insulation Inserts and Contacts



15 针公端 15-pin male
15 x Ø 1 mm
 (12 x bis 0.75 mm² + 3 x bis 1.5 mm²)



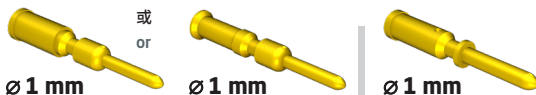
插接视图



mating view



公端子 Ø 1 mm male contact Ø 1 mm
 不是产品内容的一部分 Not part of product contents

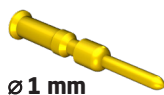


Ø 1 mm

压接范围
 0.5 - 1.5 mm²
 crimping range
 0.5 - 1.5 mm²

61.231.11

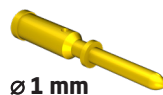
或
 or



Ø 1 mm

压接范围
 0.05 - 0.75 mm²
 crimping range
 0.05 - 0.75 mm²

61.239.11



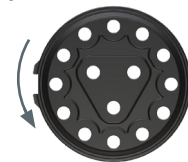
Ø 1 mm

压接范围
 0.05 - 0.75 mm²
 crimping range
 0.05 - 0.75 mm²

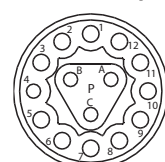
61.232.11



15 针母端 15-pin female
15 x Ø 1 mm
 (12 x bis 0.75 mm² + 3 x bis 1.5 mm²)



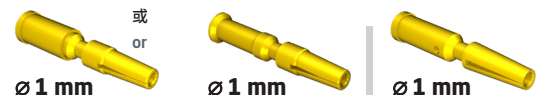
插接视图



mating view



母端子 Ø 1 mm female contact Ø 1 mm
 不是产品内容的一部分 Not part of product contents



Ø 1 mm

开槽, 压接范围
 0.5 - 1.5 mm²
 slotted, crimping range
 0.5 - 1.5 mm²

60.251.11

或
 or



Ø 1 mm

开槽, 压接范围
 0.05 - 0.75 mm²
 slotted, crimping range
 0.05 - 0.75 mm²

60.265.11



Ø 1 mm

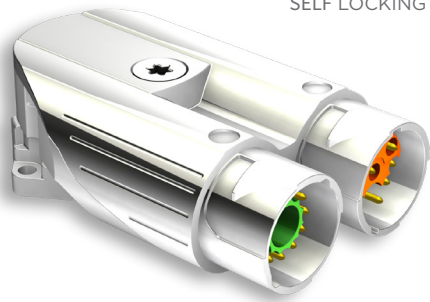
开槽, 压接范围
 0.05 - 0.75 mm²
 slotted, crimping range
 0.05 - 0.75 mm²

60.252.11

货号

Art. No.

ytec · itec
SELF LOCKING SYSTEM



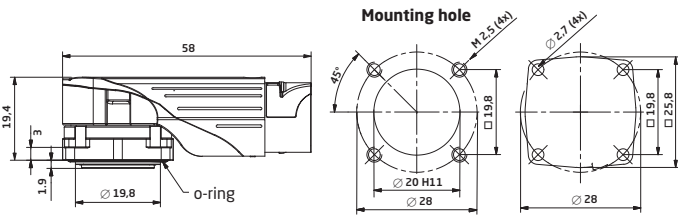
A 镀镍 nickel-plated

ytec 弯式可旋转双插座

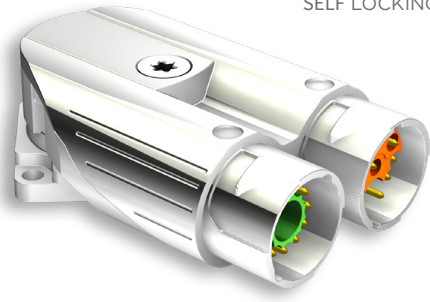
适用于 ytec, itec 快速锁定紧固件, 法兰安装 25 x 25 mm, 轴向密封

ytec Double-Receptacle Angled, Rotatable

for ytec, itec quick lock fastener, flange mount 25 x 25 mm, axial seal



ytec · itec
SELF LOCKING SYSTEM



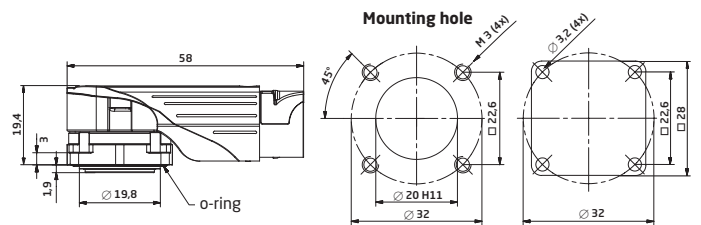
A 镀镍 nickel-plated

ytec 弯式可旋转双插座

适用于 ytec, itec 快速锁定紧固件, 法兰安装 28 x 28 mm, 轴向密封

ytec Double-Receptacle Angled, Rotatable

for ytec, itec quick lock fastener, flange mount 28 x 28 mm, axial seal



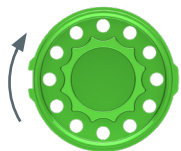
绝缘塑芯和端子

Insulation Inserts and Contacts

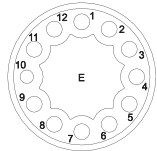


12+9 针公端
(12 x Ø 1 mm)
[12 x bis 0.75 mm²]

12+9-pin male

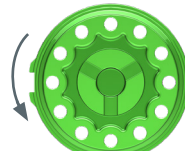


插接视图
mating view

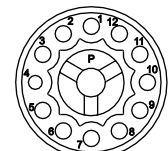


12+9 针母端
(12 x Ø 1 mm)
[12 x bis 0.75 mm²]

12+9-pin female



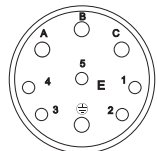
插接视图
mating view



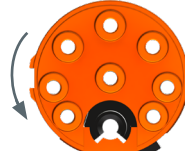
(9 x Ø 1 mm)
[4 x bis 1.5 mm² (3+PE) + 5 x bis 0.75 mm²]



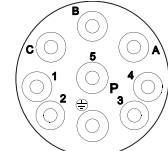
插接视图
mating view



(9 x Ø 1 mm)
[4 x bis 1.5 mm² (3+PE) + 5 x bis 0.75 mm²]

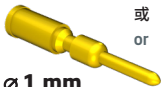


插接视图
mating view



公端子 Ø 1 mm
不是产品内容的一部分

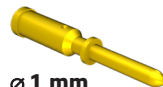
male contact Ø 1 mm
Not part of product contents



Ø 1 mm
压接范围
0.5 - 1.5 mm²
crimping range
0.5 - 1.5 mm²



Ø 1 mm
压接范围
0.05 - 0.75 mm²
crimping range
0.05 - 0.75 mm²

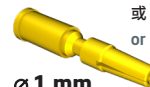


Ø 1 mm
压接范围
0.05 - 0.75 mm²
crimping range
0.05 - 0.75 mm²



母端子 Ø 1 mm
不是产品内容的一部分

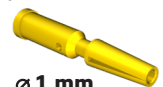
female contact Ø 1 mm
Not part of product contents



Ø 1 mm
开槽, 压接范围
0.5 - 1.5 mm²
slotted, crimping range
0.5 - 1.5 mm²

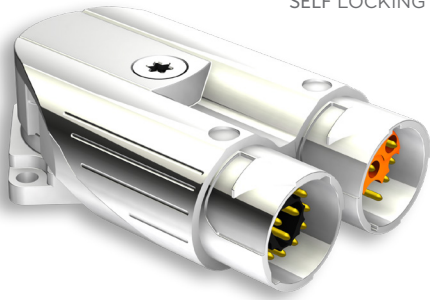


Ø 1 mm
开槽, 压接范围
0.05 - 0.75 mm²
slotted, crimping range
0.05 - 0.75 mm²

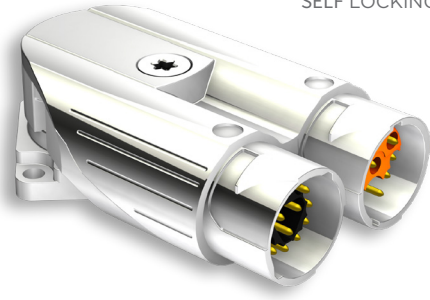


Ø 1 mm
开槽, 压接范围
0.05 - 0.75 mm²
slotted, crimping range
0.05 - 0.75 mm²

ytec · itec
SELF LOCKING SYSTEM



ytec · itec
SELF LOCKING SYSTEM



A 镀镍 nickel-plated

ytec 弯式可旋转双插座 ytec Double-Receptacle Angled, Rotatable

适用于 ytec, itec 快速锁定紧固件, 法兰安装 25 x 25 mm, 轴向密封

for ytec, itec quick lock fastener, flange mount 25 x 25 mm, axial seal

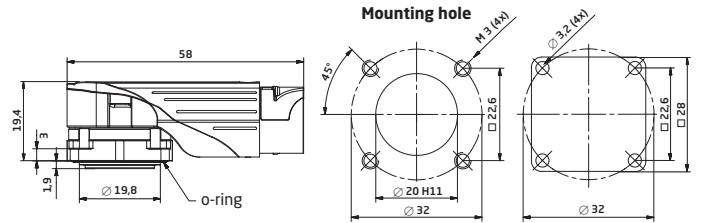
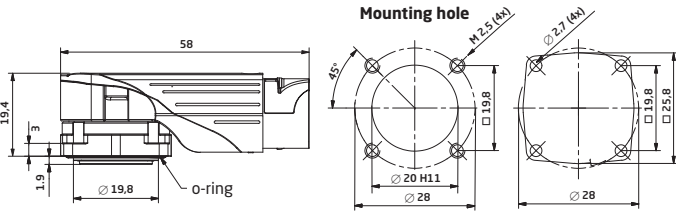


A 镀镍 nickel-plated

ytec 弯式可旋转双插座 ytec Double-Receptacle Angled, Rotatable

适用于 ytec, itec 快速锁定紧固件, 法兰安装 28 x 28 mm, 轴向密封

for ytec, itec quick lock fastener, flange mount 28 x 28 mm, axial seal

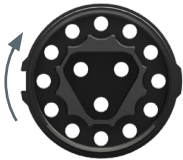


绝缘塑芯和端子

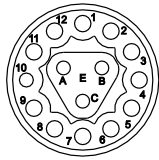
Insulation Inserts and Contacts



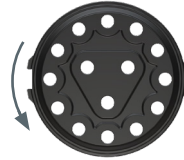
15+9 针公端 (15 x Ø 1 mm) 15+9-pin male
[12 x bis 0.75 mm² + 3 x bis 1.5 mm²]



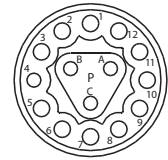
插接视图 mating view



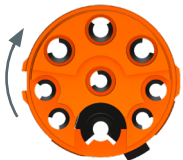
15+9 针母端 (15 x Ø 1 mm) 15+9-pin female
[12 x bis 0.75 mm² + 3 x bis 1.5 mm²]



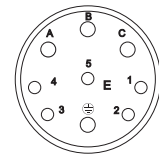
插接视图 mating view



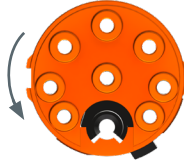
(9 x Ø 1 mm) [4 x bis 1.5 mm² (3+PE) + 5 x bis 0.75 mm²]



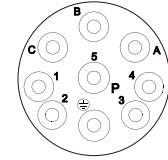
插接视图 mating view



(9 x Ø 1 mm) [4 x bis 1.5 mm² (3+PE) + 5 x bis 0.75 mm²]



插接视图 mating view



公端子 Ø 1 mm 不是产品内容的一部分 male contact Ø 1 mm Not part of product contents



Ø 1 mm 压接范围 0.5 - 1.5 mm² crimping range 0.5 - 1.5 mm²

61.231.11

Ø 1 mm 压接范围 0.05 - 0.75 mm² crimping range 0.05 - 0.75 mm²

61.239.11

Ø 1 mm 压接范围 0.05 - 0.75 mm² crimping range 0.05 - 0.75 mm²

61.232.11



母端子 Ø 1 mm 不是产品内容的一部分 female contact Ø 1 mm Not part of product contents



Ø 1 mm 开槽, 压接范围 0.5 - 1.5 mm² slotted, crimping range 0.5 - 1.5 mm²

60.251.11

Ø 1 mm 开槽, 压接范围 0.05 - 0.75 mm² slotted, crimping range 0.05 - 0.75 mm²

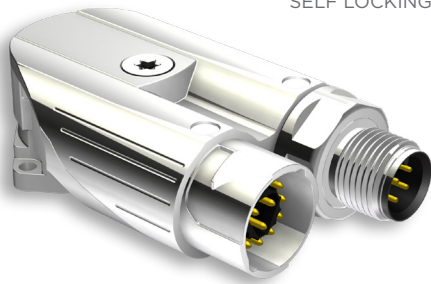
60.265.11

Ø 1 mm 开槽, 压接范围 0.05 - 0.75 mm² slotted, crimping range 0.05 - 0.75 mm²

60.252.11

货号 Art. No.

ytec · itec
SELF LOCKING SYSTEM



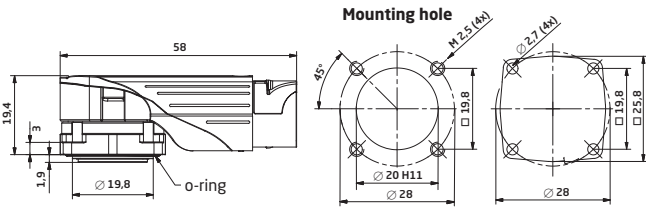
A 镀镍 nickel-plated

ytec 弯式可旋转双插座

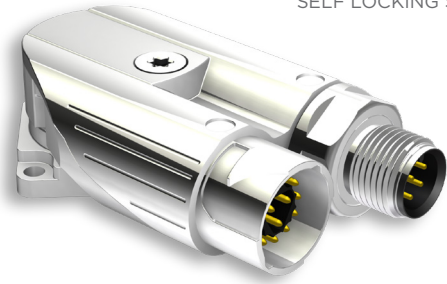
适用于 ytec, itec 快速锁定紧固件, 法兰安装 25 x 25 mm, 轴向密封

ytec Double-Receptacle Angled, Rotatable

for ytec, itec quick lock fastener, flange mount 25 x 25 mm, axial seal



ytec · itec
SELF LOCKING SYSTEM



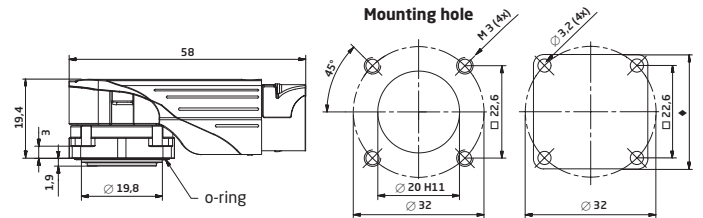
A 镀镍 nickel-plated

ytec 弯式可旋转双插座

适用于 ytec, itec 快速锁定紧固件, 法兰安装 28 x 28 mm, 轴向密封

ytec Double-Receptacle Angled, Rotatable

for ytec, itec quick lock fastener, flange mount 28 x 28 mm, axial seal



绝缘塑芯和端子

Insulation Inserts and Contacts



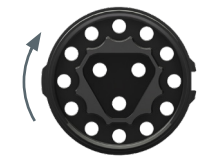
15+5 插针公端 [15 x Ø 1 mm (12 x bis 0.75 mm² + 3 x bis 1.5 mm²)]

15+5-pin male

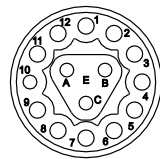
+

5 插针 M12 (5 x Ø 0.8 mm), 带有焊接公端子

5-pin M12 (5 x Ø 0.8 mm) with solder male contacts



插接视图



mating view

+



插接视图

mating view



公端子 Ø 1 mm 不是产品内容的一部分

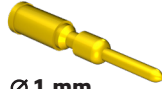
male contact Ø 1 mm Not part of product contents



Ø 1 mm

压接范围 0.5 - 1.5 mm² crimping range 0.05 - 0.75 mm²

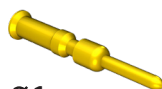
货号 Art. No. 61.232.11



Ø 1 mm

压接范围 0.5 - 1.5 mm² crimping range 0.5 - 1.5 mm²

61.231.11



Ø 1 mm

压接范围 0.05 - 0.75 mm² crimping range 0.05 - 0.75 mm²

61.239.11

货号 Art. No.

可应要求提供其他 M12 针布局。

Other M12 pin layouts are available on request.



包塑, 无需复杂的包覆成型工艺

除了 615/915 系列的标准插头和延伸产品外, TE 还提供 INTERCONTEC 锁定技术。这些金属连接器是全 EMC 屏蔽的, 在装配过程中只需一步即可安全关闭。目前 **locktec** 615/915 已实现 IP67 级防护、应力消除和 EMC 屏蔽。设计套管可永久锁定连接器, 以防止操控。集成的塑料螺旋线可在移动应用中保护电缆。特别是对于非常粗陋的工业应用, INTERCONTEC 增强了其自锁系统。要了解更多信息, 请查看我们的 **locktec** 产品目录。

Plastic covered without complex overmold process

In addition to the standard plugs and extensions of the Serie 615/915, TE offers the INTERCONTEC locking technology. These metal connectors are fully EMC-shielded and securely closed with only one step in the assembly process. Already at this time the **locktec** 615/915 is IP67 protected, strain-relieved and EMC shielded. The design sleeve locks the connector permanently and makes it manipulation proof. The integrated plastic spiral protects the cable in moving applications. Especially for very rough industrial applications, INTERCONTEC reinforced its self locking system. For further information please take a look at our **locktec** catalogue.

locktec

locktec – 涂塑连接器

- 弯折保护
- IP 66/67 防护等级
- 坚固的金属外壳
- EMC 屏蔽
- 自锁系统
- 个性化标签和颜色
- 标准电缆和不同长度的专用电缆
- 所有标准插针布局
- 多种电缆长度

locktec - Plastic Coated Connectors

- Bend protection
- IP 66/67 protection
- Robust metal housing
- EMC-shielding
- Self locking system
- Individual labelling and colour
- Standard and special cables in different lengths
- All standard pin layouts
- Individual cable lengths



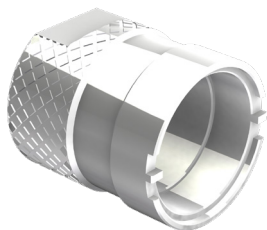
根据请求,我们还提供客户特定的包括装配说明的服务包(见上图)。

On request we also offer customer specific service packs which include assembly instructions (see picture above).



已装配连接器和单个元件经过全面测试,装在合适的单独定制盒子中,贴有标签且随时可发货。

Assembled connectors and single components are tested thoroughly, packed in suitable individually customized boxes, labelled, palletized and shipped.



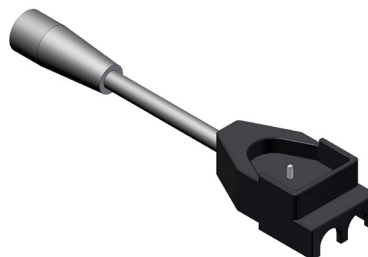
C6.132.00

装配工具

适用于与插座兼容的开槽埋头螺母 M18 x 0.75, 后部安装

Assembly Tool

for slotted counter nut M18 x 0.75 compatible with receptacle, rear mount



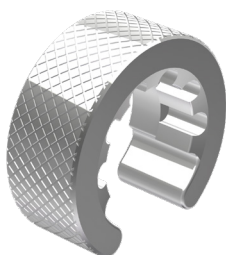
C6.176.00

装配工具

用于转动 615/915 ytec 弯式插座

Assembly Tool

for turning 615/915 ytec angled receptacles



C6.131.00

装配工具

适用于线夹螺钉紧固

Assembly Tool

for cable clamp screw-fasten



C6.178.00

装配工具

适用于固定盖 615/915 ytec 弯式插座

Assembly Tool

for fixing cover 615/915 ytec angled receptacles



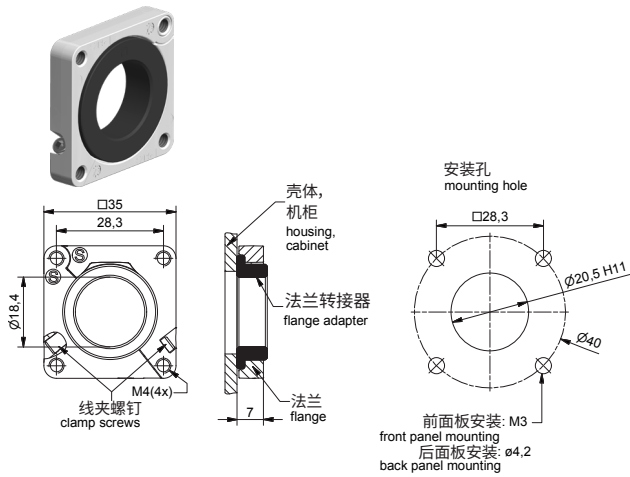
C6.140.00

装配工具

适用于带有扭矩扳手的线夹螺钉紧固

Assembly Tool

for cable clamp screw-fasten with torque wrench



EO.242.02

铰链式金属法兰

带密封环, 可与直型外壳一起使用

Metal Flange, Hinged

with sealing ring, can be used with straight housing



88.085.00

塑料保护帽

带有安全带, 适用于插座和延伸产品

Plastic Protection Cap

With safety strap, suitable for receptacles and extensions



8A.033.00

塑料保护帽

适用于插座和延伸产品

Plastic Protection Cap

suitable for receptacles and extensions



88.139.00

塑料保护帽, 带连接螺母

适用于面向后部安装的插座

Plastic Protection Cap with Coupling Nut

suitable for receptacles for rear mount



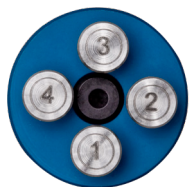
C0.235.00

数显压接工具 (通过 2 个定位器装置进行压接设置)

适用于端子线规 0.03 - 2.5 mm²。两个可调节的定位器装置允许处理各种端子。强固型设计，自校准，带有 2 个定位器装置和壳体。

Digital Crimp Tool (Crimp Set with 2 Locator units)

for contacts wire gauge 0.03 - 2.5 mm². Two adjustable locator units allow the processing of various contacts. Solid design, self-calibrating, with 2 locator units and case.



C0.242.00

C0.235.00 定位器

是产品内容的一部分。

Locator for C0.235.00

Part of product contents.

插槽	Sockets	插针	Pins
60.001.11		61.004.11	
60.011.11		61.072.11	
60.070.11		61.083.11	
60.159.11		61.141.11	
60.172.11		61.151.11	
60.205.11		61.178.11	



C0.243.00

C0.235.00 定位器

是产品内容的一部分。

Locator for C0.235.00

Part of product contents.

插座	Sockets	插针	Pins
60.197.11		61.009.11	
60.251.11		61.020.11	
60.252.11		61.167.11	
60.265.11		61.231.11	
		61.232.11	
		61.239.11	



C0.201.00

中型压接工具

适用于 Ø 1 mm 和 Ø 2 mm 端子，最大线规 4 mm²，包括定位器。

有关兼容的定位插件：请参见下文

Crimp Tool, mid-size

for Ø 1 mm and Ø 2 mm contacts max wire gauge 4 mm², includes positioner.

For compatible positioning insert: see below



C0.258.00

用于 Ø 1 mm 端子的定位插件

与压接工具 C0.201.00 和 C0.373.00 兼容

Positioning Insert for Ø 1 mm Contacts

compatible with crimp tools C0.201.00 and C0.373.00

插槽	Sockets	插针	Pins
60.251.11		61.231.11	
60.252.11 ⁽¹⁾		61.232.11 ⁽¹⁾	
60.265.11 ⁽¹⁾		61.239.11 ⁽¹⁾	

⁽¹⁾ Crimpbereich eingeschränkt 0.10 - 0.75 mm²



WA10672

气动压接工具

紧凑的免维护台式工具，压力可达 25 kN，操作压力 6 bar。手动或脚踏式开关。

交付时不带任何压接插件。

Pneumatic Crimp Tool

Compact maintenance-free table tool for pressure force up to 25 kN, operating pressure 6 bar. Hand- or foot-operated switch.

Delivery without any crimping inserts.



C0.372.00

适用于 WA10672 的小型数字压接插件

包括定位器 C0.242.00 和 C0.243.00。将手动工具 C0.235.00 的压接插件相关联。

Digital crimp insert, small for WA10672

Locator C0.242.00 and C0.243.00 included. Correlates the crimp inserts of hand tool C0.235.00.

Finding a TE Part Number - 18 digits

TE CONNECTIVITY PART NUMBER

E S B 002 N 00 32 0001 000

INTERCONTEC PART NUMBER

E S T B 002 N N 00 32 0001 000

Series / 系列
 A = Signal (617, 623, 627)
 B = Power (917, 923) / 功率
 C = 940
 D = 958
 E = 615/915
 P = singletec 923

Housing/外壳:
 ST Plug / 插头 → S
 KU Extensions / 延伸产品 → K
 EG Receptacles, straight 直式插座 → E
 ED Receptacles, angled, rotatable 可旋转弯式插座 → G
 DF Bulkhead connector / 穿板式连接器 → D
 EW Receptacles, angled 弯式插座 → F
 SD Plug, angled, rotatable 可旋转弯式插头 → U

压环材料:
 A = 金属电缆配件
 B = 塑料电缆配件

Material for clamping ring:
 A = metal cable fitting
 B = plastic cable fitting

绝缘塑芯:
 内部代码
Insulation Inserts:
 internal code

包装:
 内部代码
Packaging:
 internal code

设计变体:
 内部代码
Design Variation:
 internal code

电缆固定夹:
 内部代码
 对于穿板式连接器, 插座和弯式插座的相应字段标记为“00”。

Cable Clamp:
 internal code
 For bulkhead connectors, receptacles and angled receptacles corresponding field is marked „00“.

端子:
 内部代码
 NN 00 = 端子不属于交货内容一部分。
 * 请单独订购, 并指明项目号。

Contacts:
 internal code
 NN 00 = contacts not part of delivery contents.
 * Please order separately with denoted item number.

MALE / 公端			FEMALE / 母端		
OLD / 旧	NEW / 新	CONNECTION / 连接	OLD / 旧	NEW / 新	CONNECTION / 连接
MR	M	CRIMP	FR	F	CRIMP
MS	S	SOLDER / 焊接	FS	G	SOLDER / 焊接
MD	D	BOARD SOLDER / 板焊接	FD	H	BOARD SOLDER / 板焊接
MU	U	MIXED COMPONENTS / 混合元件	FU	P	MIXED COMPONENTS / 混合元件
MT	T	SCREWED / 带螺纹	FC	C	SCREW M5 LIMOTEC / 螺钉 M5 LIMOTEC
MC	K	SCREW/CRIMP / 螺钉/压接			
MM	A	618 TORQUE			
NN	N	NO CONTACTS / 常开 (NO) 触点	NN	N	



Finding a TE Part Number - 15 digits

INTERCONTEC PART NUMBER: 60.004.11

	Letter / Number 字母/数字	Letter / Number 字母/数字	Special Character / 特殊字符	Letter 字母	Number 数字	Number 数字	Number 数字	Special Character / 特殊字符	Letter / Number 字母/数字	Letter Number 字母/数字	Letter / Number 字母/数字	Special Character / 特殊字符	Letter 字母/数字	Letter / Number 字母/数字	Letter / Number 字母/数字
Part Number (Old) / 部件号(旧)	Position/ 位置 1	Position/ 位置 2	Position/ 位置 3	Position/ 位置 4	Position/ 位置 5	Position/ 位置 6	Position/ 位置 7	Position/ 位置 8	Position/ 位置 9	Position/ 位置 10	Position/ 位置 11	Position/ 位置 12	Position/ 位置 13	Position/ 位置 14	Position/ 位置 15
10.415.02	1	0	.		4	1	5	.		0	2				
60.004.11	6	0	.		0	0	4	.		1	1				
60.046.21.015	6	0	.		0	4	6	.		2	1	.	0	1	5
81.139.T92	8	1	.		1	3	9	.	T	9	2				
8C.001.01.001	8	C	.		0	0	1	.		0	1	.	0	0	1
A6.032.F15	A	6	.		0	3	2	.	F	1	5				
BB.182.00-SW	B	B	.		1	8	2	.		0	0	-	S	W	
FF.051.00.010	F	F	.		0	5	1	.		0	0	.	0	1	0
40.A132.00	4	0	.	A	1	3	2	.		0	0				

TE CONNECTIVITY PART NUMBER: 60-0004-011-0000

	Letter / Number 字母/数字	Letter / Number 字母/数字	Special Character / 特殊字符	Letter 字母	Number 数字	Number 数字	Number 数字	Special Character / 特殊字符	Letter / Number 字母/数字	Letter Number 字母/数字	Letter / Number 字母/数字	Special Character / 特殊字符	Letter 字母/数字	Letter / Number 字母/数字	Letter / Number 字母/数字
Part Number (New) / 部件号(新)	Position/ 位置 1	Position/ 位置 2	Position/ 位置 3	Position/ 位置 4	Position/ 位置 5	Position/ 位置 6	Position/ 位置 7	Position/ 位置 8	Position/ 位置 9	Position/ 位置 10	Position/ 位置 11	Position/ 位置 12	Position/ 位置 13	Position/ 位置 14	Position/ 位置 15
10-0415-002-000	1	0	-	0	4	1	5	-	0	0	2	-	0	0	0
60-0004-011-000	6	0	-	0	0	0	4	-	0	1	1	-	0	0	0
60-0046-021-015	6	0	-	0	0	4	6	-	0	2	1	-	0	1	5
81-0139-T92-000	8	1	-	0	1	3	9	-	T	9	2	-	0	0	0
8C-0001-001-001	8	C	-	0	0	0	1	-	0	0	1	-	0	0	1
A6-0032-F15-000	A	6	-	0	0	3	2	-	F	1	5	-	0	0	0
BB-0182-000-0SW	B	B	-	0	1	8	2	-	0	0	0	-	0	S	W
FF-0051-000-010	F	F	-	0	0	5	1	-	0	0	0	-	0	1	0
40-A132-000-000	4	0	-	A	1	3	2	-	0	0	0	-	0	0	0

常用铜线换算表(单位 AWG 和 mm²)Conversion table of prevalent copper wires in AWG and mm²

基于 DIN EN 60529 的 IP 防护等级

IP protection rating according to DIN EN 60529

导线横截面 Wire Cross-Section		线径 Wire Diameter		
AWG	mm ²	sq. inches	mm	inches
40	0,005	0,000008	0,080	0,00315
39	0,006	0,000010	0,090	0,00353
38	0,008	0,000012	0,101	0,00397
37	0,010	0,000016	0,113	0,00445
36	0,013	0,000020	0,127	0,00500
35	0,016	0,000025	0,134	0,00562
34	0,020	0,000031	0,160	0,00631
33	0,025	0,000039	0,180	0,00708
32	0,032	0,000050	0,202	0,00795
31	0,040	0,000063	0,227	0,00893
30	0,051	0,000079	0,255	0,01003
29	0,064	0,000100	0,286	0,01126
28	0,081	0,000125	0,321	0,01264
27	0,102	0,000158	0,361	0,01420
26	0,129	0,000200	0,405	0,01594
25	0,162	0,000252	0,455	0,01790
24	0,205	0,000317	0,511	0,02010
23	0,258	0,000400	0,573	0,02257
22	0,326	0,000505	0,644	0,02535
21	0,410	0,000636	0,723	0,02846
20	0,518	0,000802	0,812	0,03196
19	0,653	0,001012	0,912	0,03589
18	0,823	0,001276	1,024	0,04030
17	1,038	0,001609	1,150	0,04526
16	1,309	0,002028	1,291	0,05082
15	1,650	0,002558	1,450	0,05707
14	2,081	0,003225	1,628	0,06408
13	2,624	0,004067	1,828	0,07196
12	3,309	0,005129	2,053	0,08081
11	4,172	0,006467	2,305	0,09074
10	5,261	0,008155	2,588	0,10190
9	6,631	0,010279	2,906	0,11440
8	8,367	0,012969	3,264	0,12850
7	10,551	0,016354	3,665	0,14430
6	13,298	0,020612	4,115	0,16200
5	16,766	0,025987	4,620	0,18190
4	21,149	0,032781	5,189	0,20430
3	26,665	0,041331	5,827	0,22940
2	33,624	0,052117	6,543	0,25760
1	42,409	0,065733	7,348	0,28930
0	53,488	0,082907	8,252	0,32490

第 1 位数字 1 st Digit		注释 Comment
0	无防护 No protection	
1	防止直径为 50mm 或更大的固体异物。 Protected against solid foreign objects with a diameter of 50 mm or larger.	
2	防止直径为 12.5mm 或更大的固体异物。 Protected against solid foreign objects with a diameter of 12.5 mm or larger.	
3	防止直径为 2.5mm 或更大的固体异物。 Protected against solid foreign objects with a diameter of 2.5 mm or larger.	
4	防止直径为 2.5 mm 或更大的固体异物。 Protected against solid foreign objects with a diameter of 2.5 mm or larger.	
5	防尘。 Dust-protected.	不能完全阻止灰尘进入,但灰尘的渗入量不能影响设备的正常运行或损害安全。 Ingress of dust is not totally prevented, but dust shall not penetrate in a quantity to interfere with satisfactory operation of the apparatus or to impair safety.
6	防尘 Dust tight	无灰尘进入 No ingress of dust

IP 防护等级符合 DIN EN 60529

IP protection rating according to DIN EN 60529

第 2 位数字		2 nd Digit
编号 No.	定义 Definition	注释 Comment
0	无防护 No protection	
1	防止垂直落下的水滴 Protected against vertically falling water drops	
2	防止外壳倾斜至 15° 时垂直落下的水滴 Protected against vertically falling water drops when housing is tilted up to 15°	
3	防止喷水 Protected against water sprays	从垂直轴的两侧以 60° 角喷溅的水不应产生有害影响。 Water sprayed at a 60° angle from either side of the vertical axis, shall have no harmful effect.
4	防止溅水 Protected against splashed water	从任何方向溅到外壳上的水不应产生有害影响。 Water splashed against the housing from any direction shall have no harmful effect.
5	从任何方向猛烈溅到外壳上的水不应产生有害影响。 Water splashed as powerful jet against the housing from any direction shall have no harmful effect.	
6	从任何方向喷射到外壳上的水不应产生有害影响。 Water splashed as jet against the housing from any direction shall have no harmful effect.	
7	防止暂时浸入水中带来的影响 Protected against the effects of temporary immersion in water	当外壳在 1 米深的水中浸泡 30 分钟时,水的进入量不得造成有害影响。 Water shall not enter in such quantity as to cause harmful effects when the housing is immersed for 30 min. under 1 m of water.
8	防止长时间浸入水中带来的影响 Protected against the effects of long submersion in water	经制造商和用户同意,当外壳持续浸没在水中时,水的进入量不得造成有害影响。这些条件必须比上述针对防护等级 7 的条件更严格。 Water may not enter in such quantity as to cause harmful effects when the housing is continuously submersed in water under conditions which shall be agreed to by manufacturer and user. These conditions must be more severe than those above for numeral 7.
9	在高压/蒸汽清洗过程中防止水浸入 Protected against the penetration of water during high pressure / steam cleaning	从任何方向流向外壳的水以及压力增加都不应产生任何有害影响。 Water directed at the housing from any direction and with increased pressure shall not have any harmful effect.

1. 产品目录中的所有信息和数字均不具约束力,特别是有关产品的设计、尺寸和颜色的信息。

1. All information and figures in the catalogue are nonbinding, in particular regarding design, size and color of products.

2. 所有图形、图纸和其他文档的版权和所有权应归 TE Connectivity 和 INTERCONTEC 产品系列所有。这特别适用于标记为机密的文档。与第三方共享数据需要事先获得 INTERCONTEC 的书面同意。

2. Copyright and right of ownership in and to all figures, drawings and other documents shall remain with TE Connectivity and INTERCONTEC product family. This is particularly applicable to documents marked as *confidential*. Sharing of data with third parties requires prior consent in writing from INTERCONTEC.

3. 在个别情况下, INTERCONTEC 保留在收到和接受订单后,为改进产品技术而作出适当和合理的任何更改的权利。

3. In individual cases INTERCONTEC reserves the right to any changes contributing to the technical improvement of the products as appropriate and reasonable also after receipt and acceptance of orders.

术语和定义 Terms and Definitions

圆形连接器技术

圆形连接器用于将电力和信号传输到工业、医疗和环境技术以及航空航天应用中的电机、驱动器和控制装置。

连接器不能在电压和载荷的情况下连接和断开。

耦合器可以在电压和载荷的情况下连接和断开。

连接技术

压接是指向下压、凹进和折叠。压接连接已广泛取代焊接连接，并已在实践中提供了出色的性能。DIN 标准 EN 60352 等提供了压接质量规格。压接是电线和压接端子的永久性电气连接。重要的测试标准是压接宽度、压接高度和最大张应力。有两种不同的端子类型可用于压接：

转向端子：这是一种非常常见的端子类型。该线规适用于端子的压接套筒。使用可调节压接工具时，应根据制造商的数据设置压接深度。

Circular Connector Technology

Circular Connectors are used to transmit electrical power and signals to motors, drives and controls in industrial, medical and environmental technology applications as well as aerospace.

Connectors must neither be connected nor disconnected under voltage and load.

Couplers can be connected and disconnected under voltage and load.

Connection Technologies

To crimp means to press, to indent and to fold. Crimp connections have widely replaced solder connections and have delivered optimal performance in practice. DIN Standard EN 60352 amongst others provides specifications for the crimp quality. A crimp is a permanent electrical connection of a wire and a crimp contact. Important test criteria are crimp width, crimp height and maximum tensile stress. There are two different contact types available for crimping:

Turned Contacts: This is a very common contact type. The wire gage is adapted to the contact's crimp sleeve. When using an adjustable crimp tool the depth of the crimp should be set according to manufacturer's data.

冲压端子：Bandoleer (卷盘馈入) 端子分为不同的压接尺寸，以提供电线和端子的安全连接。自动化处理能够确保获得卓越的工艺可靠性。绝缘压接为导体提供额外支撑，以避免在发生振动时损坏电线

间隙和漏电距离 – 术语和定义

额定电压：额定电压是由制造商指定的电压值，作为连接器额定功率和应用范围的基础。

额定耐电压：此电压值表示特定连接器及其绝缘材料可以承载的最大临时过电压。

空气击穿间隙：间隙距离定义为两个导电元件之间通过空气的最短距离。

绝缘击穿间隙：漏电距离定义为绝缘材料表面上两个导电元件之间的最短距离。

Stamped Contacts: Bandoleer (reel feed) contacts are divided into different crimp sizes to provide a secure connection of wire and contact. Automated processing ensures highest process liability. The insulation crimp gives additional support to the conductor to avoid damage to the wires under vibration

Clearance and Creepage Distance - Terms and Definitions

Rated Voltage: The rated voltage is a voltage value specified by the manufacturer that serves as basis for the power rating and range of application of a connector.

Rated Withstanding Voltage: This voltage value indicates the maximum temporary overvoltage a specific connector and its insulation materials can carry.

Clearance Distance: The clearance distance is defined as shortest distance through the air between two conductive elements.

Creepage Distance: The creepage is defined as shortest distance on the surface of an insulating material between two conductive elements.

过压类别

该标准将过压分为四种安装类别。下面简要介绍了适用于连接器的三种类别：

安装类别 I：设备仅用于此类机器或作为不会发生过压的系统的一部分。此安装类别中的设备通常在超低电压下运行。

安装类别 II：设备仅用于此类机器或作为不会发生过压的系统的一部分。然而，可能会发生由转换引起的过压。这包括家用电器等。

安装类别 III：设备可安装在机器上或作为系统的一部分，在这些系统中不需要考虑闪电过压，但对这些设备及其供应系统的安全性和可用性有特殊要求。

绝缘材料的分类：漏电距离取决于绝缘材料的电痕特性。绝缘材料根据其相对漏电起痕指数 (CTI) 进行分类。

Overvoltage Categories

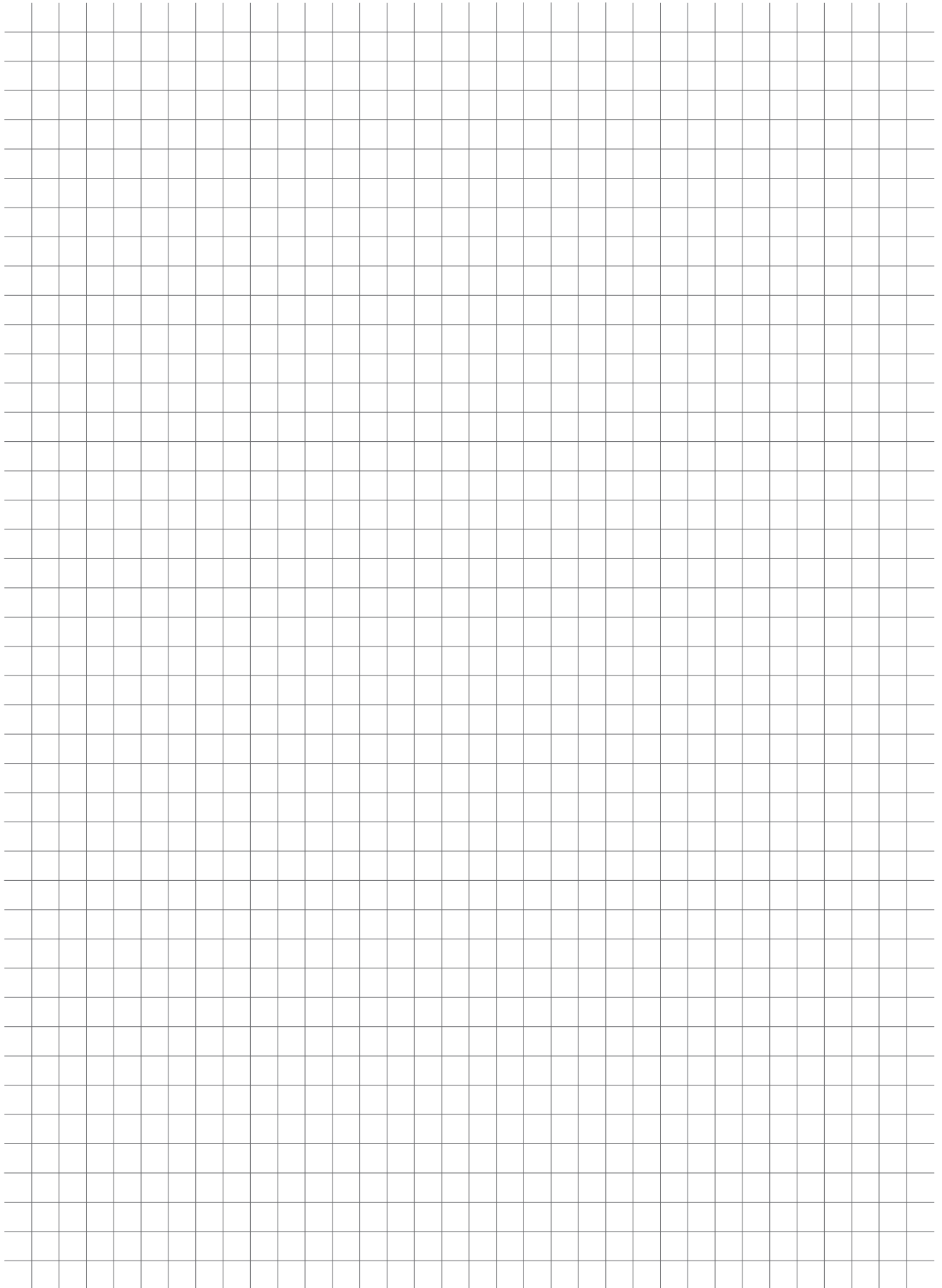
The norm divides overvoltages in four installation categories. The three categories applicable to connectors are briefly described below:

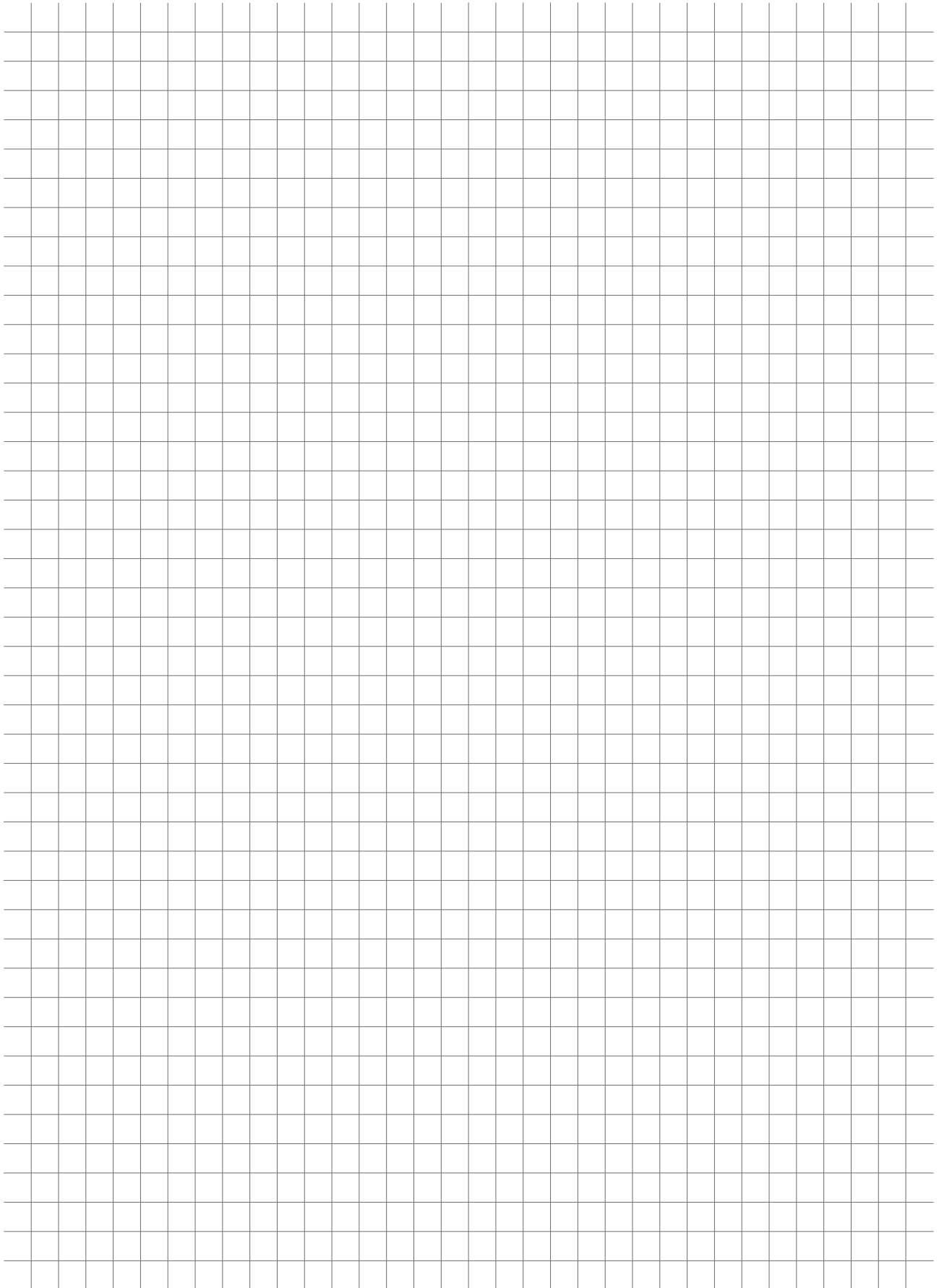
Installation Category I: Equipment is intended for use only in such machines or as part of systems where no overvoltage can occur. Equipment in this installation category is normally operated at extra low voltage.

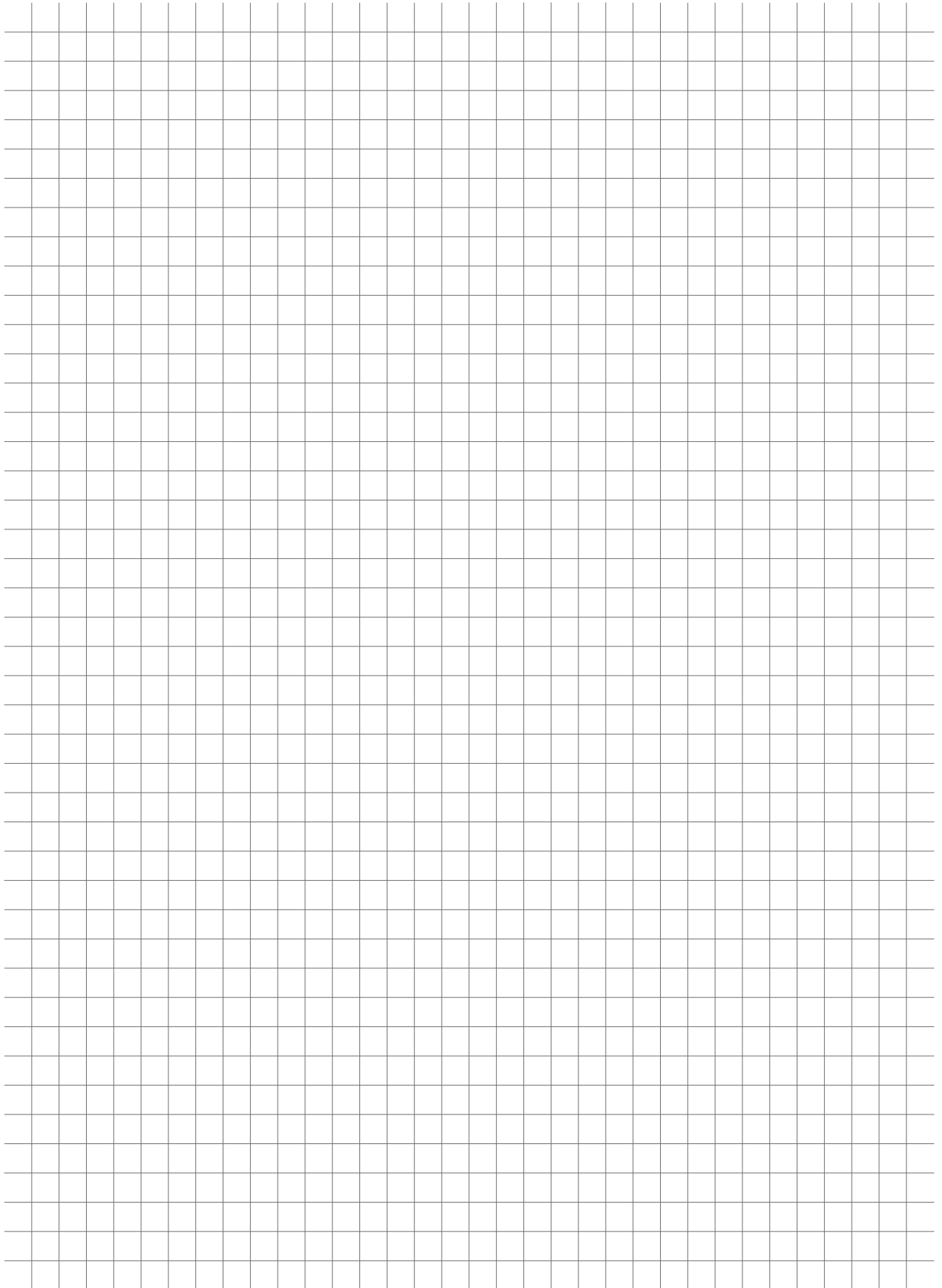
Installation Category II: Equipment is intended for use in machines or as part of systems where lightning overvoltages can not occur. Overvoltages caused by switching however may occur. This includes domestic appliances for example.

Installation Category III: Equipment is intended for installation in machines or as part of systems in which lightning overvoltages need not be considered, but which are subject to particular requirements regarding safety and availability of the equipment and its supply systems.

Categorization of Insulation Material: The creepage distances depend on the tracking characteristics of the insulation material. Insulation materials are categorized according to their Comparative Tracking Index (CTI).







Connect With Us

For questions on TE Connectivity's INTERCONTEC products, please send your request to intercontec@te.com or visit te.com/support to chat with a Product Information Specialist.

te.com

TE Connectivity, TE connectivity (logo) and Every Connection Counts are trademarks. All other logos, products and/or company names referred to herein might be trademarks of their respective owners.

The information given herein, including drawings, illustrations and schematics which are intended for illustration purposes only, is believed to be reliable. However, TE Connectivity makes no warranties as to its accuracy or completeness and disclaims any liability in connection with its use. TE Connectivity's obligations shall only be as set forth in TE Connectivity's Standard Terms and Conditions of Sale for this product and in no case will TE Connectivity be liable for any incidental, indirect or consequential damages arising out of the sale, resale, use or misuse of the product. Users of TE Connectivity products should make their own evaluation to determine the suitability of each such product for the specific application.

© 2017 TE Connectivity. All Rights Reserved.

1-1773906-1 CG 11/2021 WSP Rev.

CATALOG

TE Connectivity
Industrial Solutions

Pfnorstraße 1
64293 Darmstadt

Tel +49 (0)6151 607 1695
www.te.com